

RoHS

This products can apply to the SWB Doc NO. QA-3-04-005 of Environmental&Material Management Rules

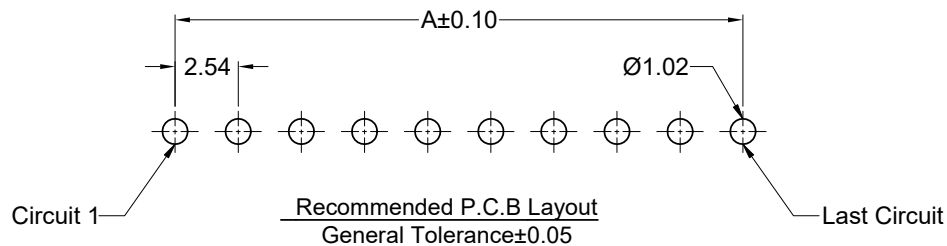
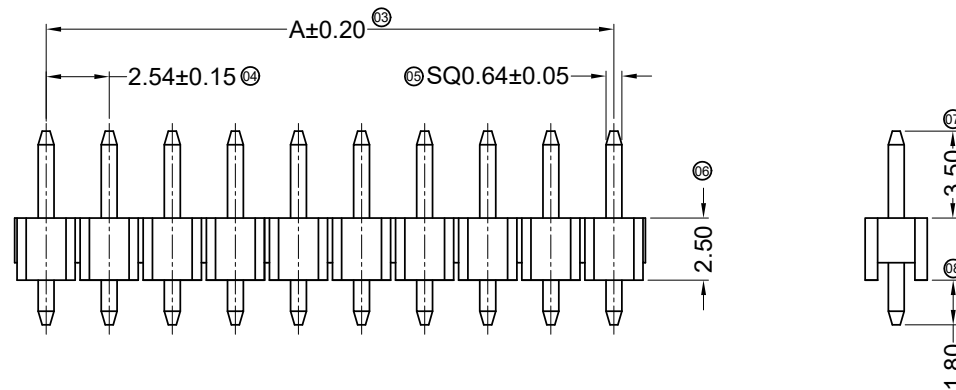
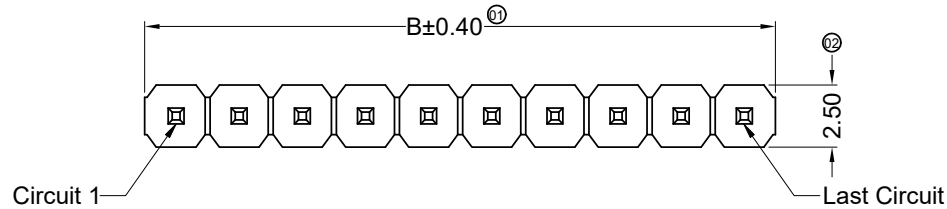
■ Specifications :

- Voltage rating: 250V AC / DC
- Current rating: 3A AC / DC
- Withstanding voltage: 800V AC/minute
- Temperature range: -40°C~+105°C
- Insulation resistance: ≥1000MΩ
- Contact resistance: ≤20mΩ
- After environmental testing: ≤30mΩ
- Material(Pin): Brass
- Mates With SWB Female Header: 6501FX


6501 W V X - XX X - 6T V01 XX- 02

① ② ③ ④ ⑤ ⑥ ⑦ ⑧ ⑨ ⑩

- ① Series No.
- ② Category: W-Wafer
- ③ Connector Type: V- 180°
- ④ Mouting Type: Blank-DIP
- ⑤ Row No.-Pin No Per Row: XX-02P~40P
- ⑥ Special No.: Blank-ordinary
- ⑦ Material: 6T-PA6T 94V-0
- ⑧ Plating Code: V01-Gold Flash
- ⑨ Color: Blank-Black Color
- ⑩ 02-3.50/2.50/1.80

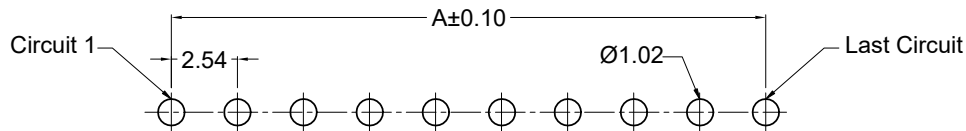
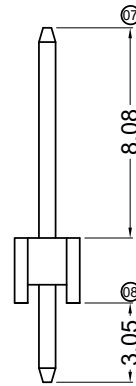
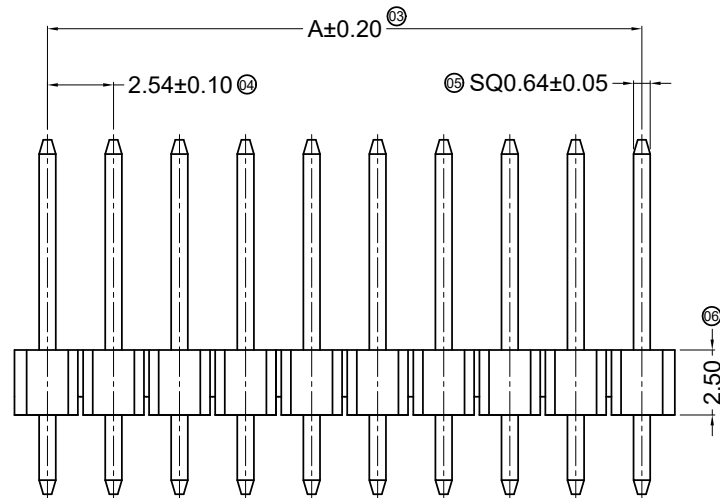
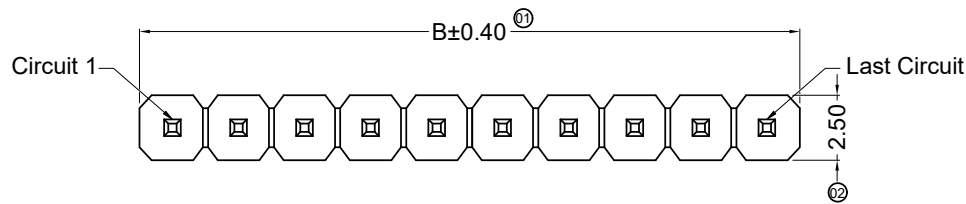


Poles	Dimensions(mm)		Poles	Dimensions(mm)	
	A	B		A	B
02	2.54	5.08	22	53.34	55.88
03	5.08	7.62	23	55.88	58.42
04	7.62	10.16	24	58.42	60.96
05	10.16	12.70	25	60.96	63.50
06	12.70	15.24	26	63.50	66.04
07	15.24	17.78	27	66.04	68.58
08	17.78	20.32	28	68.58	71.12
09	20.32	22.86	29	71.12	73.66
10	22.86	25.40	30	73.66	76.20
11	25.40	27.94	31	76.20	78.74
12	27.94	30.48	32	78.74	81.28
13	30.48	33.02	33	81.28	83.82
14	33.02	35.56	34	83.82	86.36
15	35.56	38.10	35	86.36	88.90
16	38.10	40.64	36	88.90	91.44
17	40.64	43.18	37	91.44	93.98
18	43.18	45.72	38	93.98	96.52
19	45.72	48.26	39	96.52	99.06
20	48.26	50.80	40	99.06	101.60
21	50.80	53.34			

		2020/03/16	B	EN20200316005	Update Drawing Frame	 <b>东莞市思索连接器有限公司</b> SWB CONNECTORS CO.,LTD				PART NO. 6501WV-XX-6TV01-02					
		2020/03/16	B	EN20200316005	Update Drawing Frame	Mandy	Robing	APPROVAL	CHECK	DRAWN	DATE	TITLE 2.54mm Pin Header connectors			
DATE	REV	ECN NO.	DESCRIPTION	MODIFY	APPROVAL	PROJECT	Robing	Alan qin	Mandy	2019/09/04	UNIT	SCALE	SHEET	REV	NUMBER
											mm	1 : 1	1/1	B	A-268

RoHS

This products can apply to the SWB Doc NO. QA-3-04-005 of Environmental&Material Management Rules



Recommended P.C.B Layout  
General Tolerance±0.05

■ Specifications:

- Voltage rating: 250V AC / DC
- Current rating: 3A AC / DC
- Withstanding voltage: 800V AC/minute
- Temperature range: -40°C~+105°C
- Insulation resistance: ≥1000MΩ
- Contact resistance: ≤20mΩ
- After environmental testing: ≤30mΩ
- Material(Pin): Brass
- Mates With SWB Female Header: 6501FX

6501 W V X- XX X - 6T V01 XX-07

① ② ③ ④ ⑤ ⑥ ⑦ ⑧ ⑨ ⑩

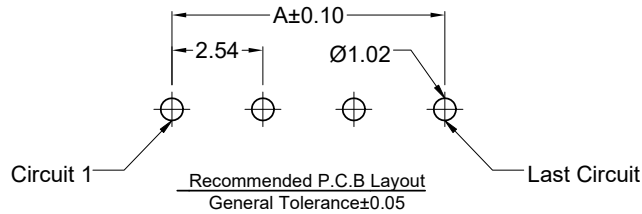
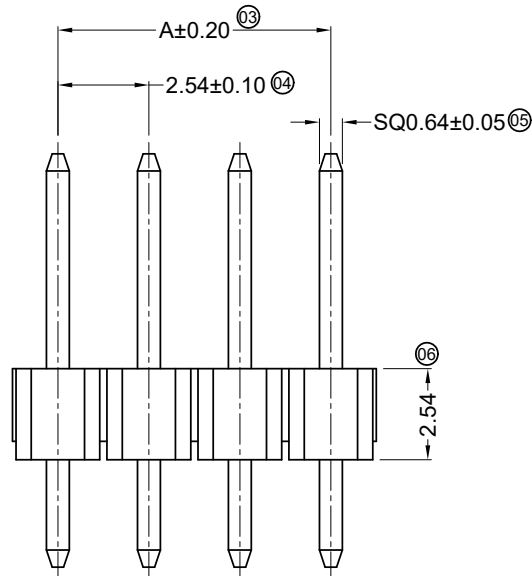
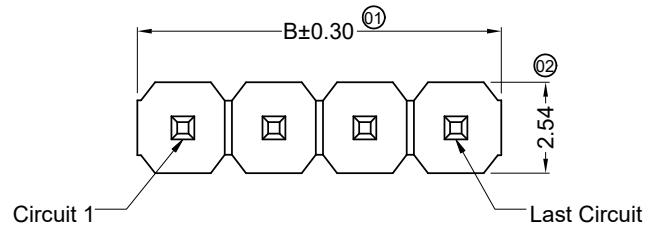
- ① Series No.
- ② Category: W-Wafer
- ③ Connector Type: V- 180°
- ④ Mouting Type: Blank-DIP
- ⑤ Row No.-Pin No Per Row: XX-02P~40P
- ⑥ Special No.: Blank-Ordinary
- ⑦ Material: 6T-PA6T 94V-0;
- ⑧ Plating Code: V01- Gold Flash
- ⑨ Color: Blank-Black Color
- ⑩ 07-8.08/2.50/3.05

Poles	Dimensions (mm)		Poles	Dimensions (mm)		Poles	Dimensions (mm)	
	A	B		A	B		A	B
01	--	2.54	15	35.56	38.10	29	71.12	73.66
02	2.54	5.08	16	38.10	40.64	30	73.66	76.20
03	5.08	7.62	17	40.64	43.18	31	76.20	78.74
04	7.62	10.16	18	43.18	45.72	32	78.74	81.28
05	10.16	12.70	19	45.72	48.26	33	81.28	83.82
06	12.70	15.24	20	48.26	50.80	34	83.82	86.36
07	15.24	17.78	21	50.80	53.34	35	86.36	88.90
08	17.78	20.32	22	53.34	55.88	36	88.90	91.44
09	20.32	22.86	23	55.88	58.42	37	91.44	93.98
10	22.86	25.40	24	58.42	60.96	38	93.98	96.52
11	25.40	27.94	25	60.96	63.50	39	96.52	99.06
12	27.94	30.48	26	63.50	66.04	40	99.06	101.60
13	30.48	33.02	27	66.04	68.58			
14	33.02	35.56	28	68.58	71.12			

					<p>GENERAL TOLERANCE</p> <p>.X ±0.30</p> <p>.XX ±0.20</p> <p>.XXX ±0.10</p> <p>X.° ±2°</p>				<p>东莞市思索连接器有限公司</p> <p>SWB CONNECTORS CO.,LTD</p>				<p>PART NO.</p> <p>6501WV-XX-6TV01-07</p>												
					<p>APPROVAL</p> <p>Robing</p>				<p>CHECK</p> <p>Alan Qin</p>				<p>DRAWN</p> <p>Mandy</p>				<p>DATE</p> <p>2020/03/16</p>				<p>TITLE</p> <p>2.54 mm Pin Header connectors</p>				
DATE	REV	ECN NO.	DESCRIPTION	MODIFY	APPROVAL	PROJECT		UNIT		SCALE		SHEET		REV		NUMBER									
									mm	1:1	1/1	A	A-268												

RoHS

This products can apply to the SWB Doc NO. QA-3-04-005 of Environmental&Material Management Rules



■ Specifications :

- Voltage rating: 250V AC / DC
- Current rating: 3A AC / DC
- Withstanding voltage: 800V AC/minute
- Temperature range: -40°C~+105°C
- Insulation resistance: ≥1000MΩ
- Contact resistance: ≤20mΩ
- After environmental testing: ≤30mΩ
- Material(Pin): Brass
- Mates With SWB Female Header: 6501FX

6501 W V X -XX X - 6T V01 XX - Q  
 ① ② ③ ④ ⑤ ⑥ ⑦ ⑧ ⑨ ⑩

- ① Series No.
- ② Category: W-wafer
- ③ Connector Type: V- 180°
- ④ Mounting Type: Blank-DIP
- ⑤ Row No.-Pin No Per Row: XX-02P~40P
- ⑥ Special No.: Blank-Ordinary
- ⑦ Material: 6T-PA6T 94V-0
- ⑧ Plating Code: V01-Gold Flash
- ⑨ Color: Blank-Black Color
- ⑩ Q-6.00/2.54/3.00

Poles	Dimensions (mm)		Poles	Dimensions (mm)	
	A	B		A	B
01	--	2.54	21	50.80	53.34
02	2.54	5.08	22	53.34	55.88
03	5.08	7.62	23	55.88	58.42
04	7.62	10.16	24	58.42	60.96
05	10.16	12.70	25	60.96	63.50
06	12.70	15.24	26	63.50	66.04
07	15.24	17.78	27	66.04	68.58
08	17.78	20.32	28	68.58	71.12
09	20.32	22.86	29	71.12	73.66
10	22.86	25.40	30	73.66	76.20
11	25.40	27.94	31	76.20	78.74
12	27.94	30.48	32	78.74	81.28
13	30.48	33.02	33	81.28	83.82
14	33.02	35.56	34	83.82	86.36
15	35.56	38.10	35	86.36	88.90
16	38.10	40.64	36	88.90	91.44
17	40.64	43.18	37	91.44	93.98
18	43.18	45.72	38	93.98	96.52
19	45.72	48.26	39	96.52	99.06
20	48.26	50.80	40	99.06	101.60

2020/03/16	G	EN20200316005	Update Drawing Frame	Mandy	Robing	GENERAL TOLERANCE .X ±0.30 .XX ±0.20 .XXX ±0.10 X.° ±2° PROJECT 
2016/02/16	F		Add Part No.	Wuxiaotao	Success	
2015/08/04	E		Modify Title	Wuxiaotao	Success	
DATE	REV	ECN NO.	DESCRIPTION	MODIFY	APPROVAL	



东莞市思索连接器有限公司

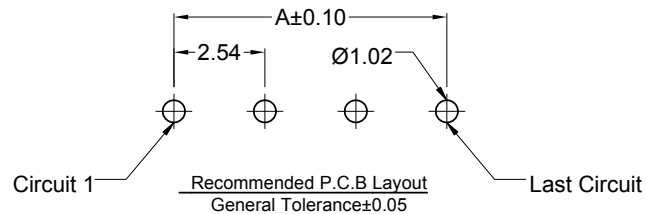
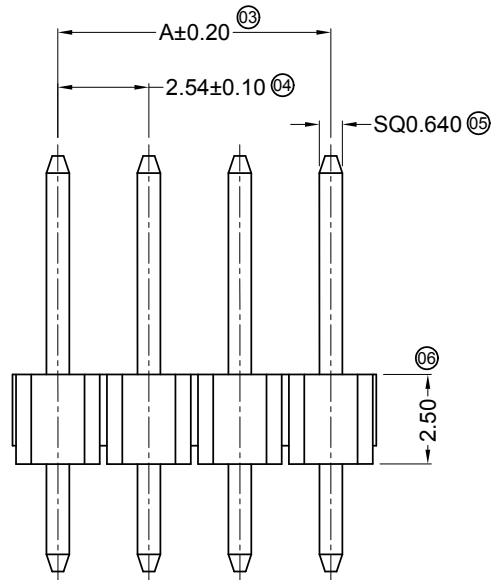
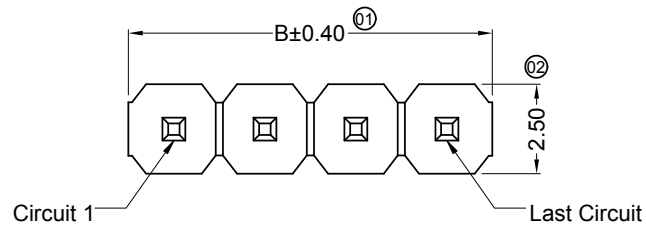
SWB CONNECTORS CO.,LTD

APPROVAL	CHECK	DRAWN	DATE
Robing	Sun Kaibao	Liu Yan	2011/09/08

PART NO. 6501WV-XX-6TV01-Q				
TITLE 2.54 mm Pin Header connectors				
UNIT	SCALE	SHEET	REV	NUMBER
mm	1 : 1	1/1	G	A-268

RoHS

This products can apply to the SWB Doc NO. QA-3-04-005 of Environmental&Material Management Rules




■ Specifications:

- Voltage rating: 250V AC / DC
- Current rating: 3A AC / DC
- Withstanding voltage: 800V AC/minute
- Temperature range: -40°C~+105°C
- Insulation resistance: ≥1000MΩ
- Contact resistance: ≤20mΩ
- After environmental testing: ≤30mΩ
- Material(Pin): Brass
- Mates With SWB Female Header: 6501FX

6501 W V X -XX X - 6T V01 XX - W  
 ① ② ③ ④ ⑤ ⑥ ⑦ ⑧ ⑨ ⑩

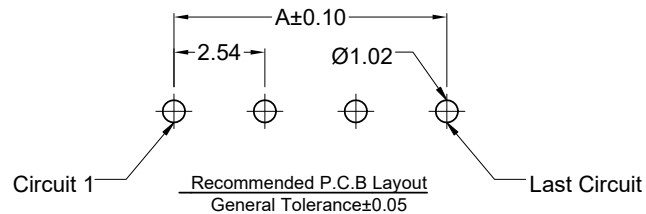
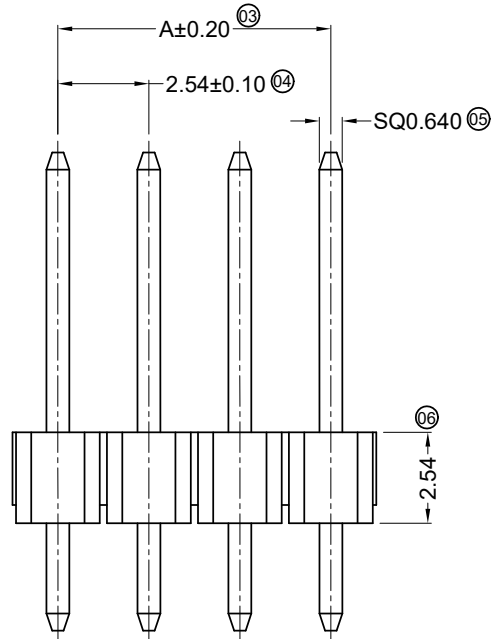
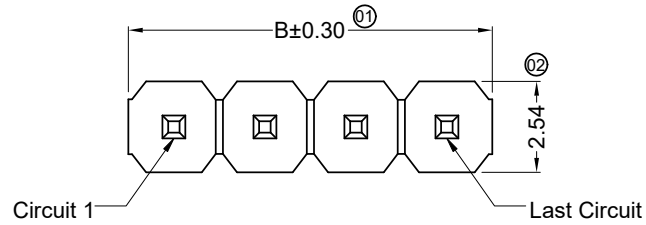
- ① Series No.
- ② Category: W-Wafer
- ③ Connector Type: V- 180°
- ④ Mounting Type: Blank-DIP
- ⑤ Row No.-Pin No Per Row: XX-02P~40P
- ⑥ Special No.: Blank-Ordinary
- ⑦ Material: 6T-PA6T 94V-0
- ⑧ Plating Code: V01-Gold Flash
- ⑨ Color: Blank-Black Color
- ⑩ W-6.10/2.50/3.00

Poles	Dimensions (mm)		Poles	Dimensions (mm)	
	A	B		A	B
01	--	2.54	21	50.80	53.34
02	2.54	5.08	22	53.34	55.88
03	5.08	7.62	23	55.88	58.42
04	7.62	10.16	24	58.42	60.96
05	10.16	12.70	25	60.96	63.50
06	12.70	15.24	26	63.50	66.04
07	15.24	17.78	27	66.04	68.58
08	17.78	20.32	28	68.58	71.12
09	20.32	22.86	29	71.12	73.66
10	22.86	25.40	30	73.66	76.20
11	25.40	27.94	31	76.20	78.74
12	27.94	30.48	32	78.74	81.28
13	30.48	33.02	33	81.28	83.82
14	33.02	35.56	34	83.82	86.36
15	35.56	38.10	35	86.36	88.90
16	38.10	40.64	36	88.90	91.44
17	40.64	43.18	37	91.44	93.98
18	43.18	45.72	38	93.98	96.52
19	45.72	48.26	39	96.52	99.06
20	48.26	50.80	40	99.06	101.60

						 <b>东莞市思索连接器有限公司</b> SWB CONNECTORS CO.,LTD				PART NO. 6501WV-XX-6TV01-W				
						APPROVAL    CHECK    DRAWN    DATE				TITLE 2.54 mm Pin Header connectors				
2020/03/16	B	EN20200316005	Update Drawing Frame	Mandy	Robing	Robing	Sun Kaibao	Liu Yan	2011/09/08	UNIT	SCALE	SHEET	REV	NUMBER
DATE	REV	ECN NO.	DESCRIPTION	MODIFY	APPROVAL	PROJECT				mm	1 : 1	1/1	B	A-268

RoHS

This products can apply to the SWB Doc NO. QA-3-04-005 of Environmental&Material Management Rules



■ Specifications:

- Voltage rating: 250V AC / DC
- Current rating: 3A AC / DC
- Withstanding voltage: 800V AC/minute
- Temperature range: -40°C~+105°C
- Insulation resistance: ≥1000MΩ
- Contact resistance: ≤20mΩ
- After environmental testing: ≤30mΩ
- Material(Pin): Brass
- Mates With SWB Female Header: 6501FX

6501 W V X -XX X - 9T V01 XX - N  
 ① ② ③ ④ ⑤ ⑥ ⑦ ⑧ ⑨ ⑩

- ① Series No.
- ② Category: W-Wafer
- ③ Connector Type: V- 180°
- ④ Mounting Type: Blank-DIP
- ⑤ Row No.-Pin No Per Row: XX-02P~40P
- ⑥ Special No.: Blank-Ordinary
- ⑦ Material: 9T-PA9T 94V-0
- ⑧ Plating Code: V01-Gold Flash
- ⑨ Color: Blank-Black Color
- ⑩ N-7.81/2.54/3.00

Poles	Dimensions (mm)		Poles	Dimensions (mm)	
	A	B		A	B
01	--	2.54	21	50.80	53.34
02	2.54	5.08	22	53.34	55.88
03	5.08	7.62	23	55.88	58.42
04	7.62	10.16	24	58.42	60.96
05	10.16	12.70	25	60.96	63.50
06	12.70	15.24	26	63.50	66.04
07	15.24	17.78	27	66.04	68.58
08	17.78	20.32	28	68.58	71.12
09	20.32	22.86	29	71.12	73.66
10	22.86	25.40	30	73.66	76.20
11	25.40	27.94	31	76.20	78.74
12	27.94	30.48	32	78.74	81.28
13	30.48	33.02	33	81.28	83.82
14	33.02	35.56	34	83.82	86.36
15	35.56	38.10	35	86.36	88.90
16	38.10	40.64	36	88.90	91.44
17	40.64	43.18	37	91.44	93.98
18	43.18	45.72	38	93.98	96.52
19	45.72	48.26	39	96.52	99.06
20	48.26	50.80	40	99.06	101.60

						东莞市思索连接器有限公司 SWB CONNECTORS CO.,LTD				PART NO. 6501WV-XX-9TV01-N				
						APPROVAL Tang Joshua Alan qin				TITLE 2.54 mm Pin Header connectors				
GENERAL TOLERANCE .X ±0.30 .XX ±0.20 .XXX ±0.10 X.° ±2°						CHECK Joshua				DATE 2017/04/21				
PROJECT 						DRAWN Alan qin				UNIT SCALE SHEET REV NUMBER mm 1 : 1 1/1 B A-268				
2020/03/16	B	EN20200316005	Update Drawing Frame	Mandy	Robing									
DATE	REV	ECN NO.	DESCRIPTION	MODIFY	APPROVAL									

RoHS

This products can apply to the SWB Doc NO. QA-3-04-005 of Environmental&Material Management Rules

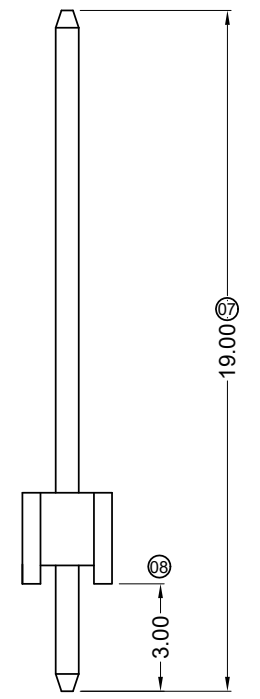
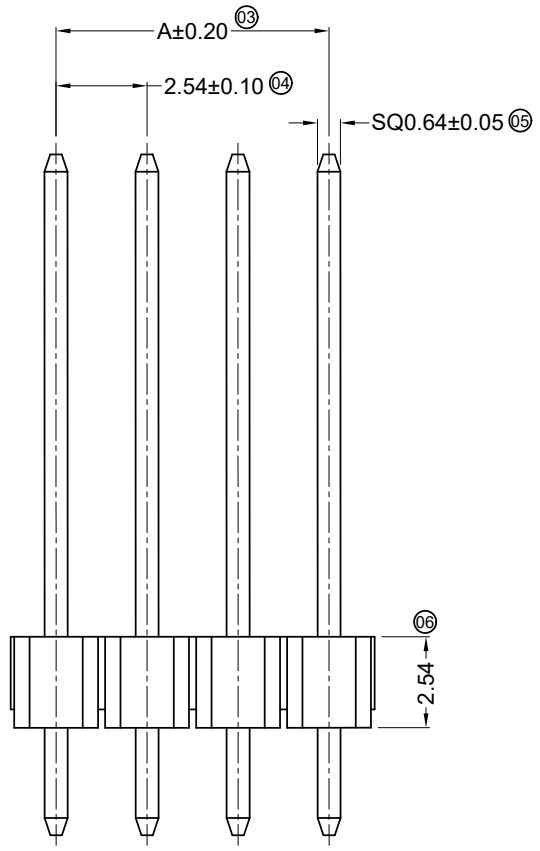
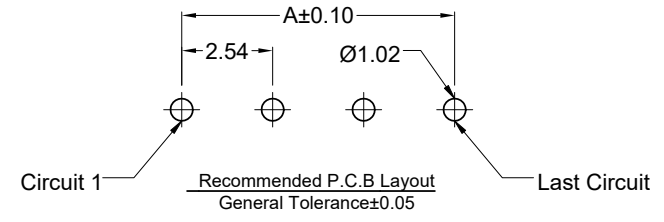
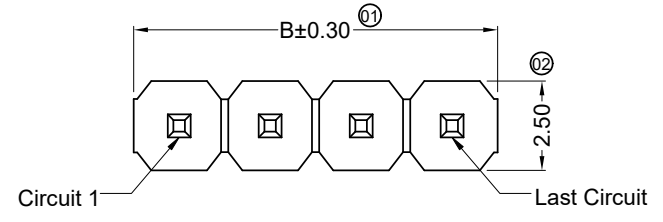
■ Specifications :

- Voltage rating: 250V AC / DC
- Current rating: 3A AC / DC
- Withstanding voltage: 800V AC/minute
- Temperature range: -40°C~+105°C
- Insulation resistance: ≥1000MΩ
- Contact resistance: ≤20mΩ
- After environmental testing: ≤30mΩ
- Material(Pin): Brass
- Mates With SWB Female Header: 6501FX

6501 W V X -XX X - 9T V01 XX - 04  
 ① ② ③ ④ ⑤ ⑥ ⑦ ⑧ ⑨ ⑩

- ① Series No.
- ② Category: W-Wafer
- ③ Connector Type: V- 180°
- ④ Mounting Type: Blank-DIP
- ⑤ Row No.-Pin No Per Row: XX-02P~40P
- ⑥ Special No.: Blank-Ordinary
- ⑦ Material: 9T-PA9T 94V-0
- ⑧ Plating Code: V01-Gold Flash
- ⑨ Color: Blank-Black color
- ⑩ 04-13.46/2.54/3.00

Poles	Dimensions (mm)		Poles	Dimensions (mm)	
	A	B		A	B
01	--	2.54	21	50.80	53.34
02	2.54	5.08	22	53.34	55.88
03	5.08	7.62	23	55.88	58.42
04	7.62	10.16	24	58.42	60.96
05	10.16	12.70	25	60.96	63.50
06	12.70	15.24	26	63.50	66.04
07	15.24	17.78	27	66.04	68.58
08	17.78	20.32	28	68.58	71.12
09	20.32	22.86	29	71.12	73.66
10	22.86	25.40	30	73.66	76.20
11	25.40	27.94	31	76.20	78.74
12	27.94	30.48	32	78.74	81.28
13	30.48	33.02	33	81.28	83.82
14	33.02	35.56	34	83.82	86.36
15	35.56	38.10	35	86.36	88.90
16	38.10	40.64	36	88.90	91.44
17	40.64	43.18	37	91.44	93.98
18	43.18	45.72	38	93.98	96.52
19	45.72	48.26	39	96.52	99.06
20	48.26	50.80	40	99.06	101.60



DATE	REV	ECN NO.	DESCRIPTION	MODIFY	APPROVAL
2020/03/16	B	EN20200316005	Update Drawing Frame	Mandy	Robing

GENERAL TOLERANCE  
 .X ±0.30  
 .XX ±0.20  
 .XXX ±0.10  
 X.° ±2°

PROJECT

APPROVAL: Robing  
 CHECK: Alan Qin  
 DRAWN: Mandy  
 DATE: 2019/11/25

东莞市思索连接器有限公司  
 SWB CONNECTORS CO.,LTD

PART NO. 6501WV-XX-9TV01-04

TITLE: 2.54 mm Pin Header connectors

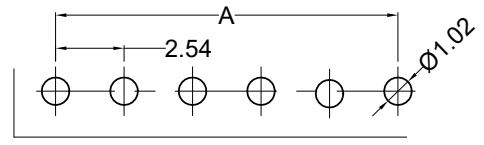
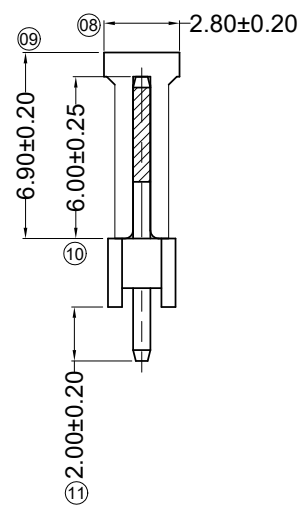
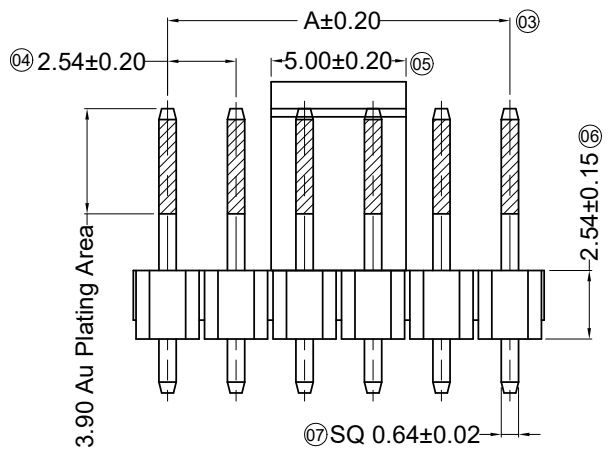
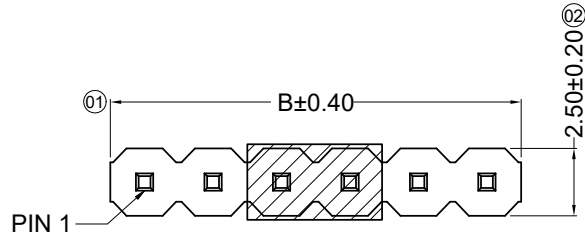
UNIT	SCALE	SHEET	REV	NUMBER
mm	1 : 1	1/1	B	A-268

RoHS

This products can apply to the SWB Doc NO. QA-3-04-005 of Environmental&Material Management Rules

■ Specifications :

- Voltage rating: 250V AC / DC
- Current rating: 3A AC / DC
- Withstanding voltage: 800V AC/minute
- Temperature range: -25°C~+85°C
- Insulation resistance: ≥1000MΩ
- Contact resistance: ≤20mΩ
- After environmental testing: ≤30mΩ
- Material(Pin): Brass Material(CAP): LCP UL94V-0 Halogen free
- Mates With SWB Wafer: 6501FX



Recommended P.C.B Layout  
General Tolerance±0.05

6501 W V -XX FC - LP XXX -H  
①② ③④ ⑤⑥ ⑦ ⑧

- ① Series No.
- ② Category: W-wafer
- ③ Connector Type: V-180°
- ④ Row No.-Pin No Per Row.: XX-Single row
- ⑤ Special NO.: FC-Halogen free With CAP
- ⑥ Material: LP-LCP UL94V-0
- ⑦ Plating Code:  
V01-Gold Flash Ni 50u"Min. Overall  
V30-Contact Area Gold 30u"Min. Other Area Gold Flash Ni 50u"Min. Overall  
SW-Matte Tin 100u"Min. Ni 50u"Min. Overall
- ⑧ H-L=6.00/2.54/2.00

Poles	Dimensions (mm)		Poles	Dimensions (mm)		Poles	Dimensions (mm)		Poles	Dimensions (mm)	
	A	B		A	B		A	B		A	B
01	--	2.54	11	25.40	27.94	21	50.80	53.34	31	76.20	78.74
02	2.54	5.08	12	27.94	30.48	22	53.34	55.88	32	78.74	81.28
03	5.08	7.62	13	30.48	33.02	23	55.88	58.42	33	81.28	83.82
04	7.62	10.16	14	33.02	35.56	24	58.42	60.96	34	83.82	86.36
05	10.16	12.70	15	35.56	38.10	25	60.96	63.50	35	86.36	88.90
06	12.70	15.24	16	38.10	40.64	26	63.50	66.04	36	88.90	91.44
07	15.24	17.78	17	40.64	43.18	27	66.04	68.58	37	91.44	93.98
08	17.78	20.32	18	43.18	45.72	28	68.58	71.12	38	93.98	96.52
09	20.32	22.86	19	45.72	48.26	29	71.12	73.66	39	96.52	99.06
10	22.86	25.40	20	48.26	50.80	30	73.66	76.20	40	99.06	101.60

DATE	REV	ECN NO.	DESCRIPTION	MODIFY	APPROVAL
20-03-09	B	EN20200316005	Update drawing	Mali	Joshua

GENERAL TOLERANCE  
.X ±0.35  
.XX ±0.25  
.XXX ±0.15  
X.° ±2°

PROJECT

东莞市思索连接器有限公司  
SWB CONNECTORS CO.,LTD

APPROVAL: Robing, CHECK: Robing, DRAWN: Joshua, DATE: 2017/04/20

PART NO. 6501WV-XXFC-LPXXX-H

TITLE 2.54mm Pin Header connectors

UNIT	SCALE	SHEET	REV	NUMBER
mm	1:1	1/1	B	A-213

RoHS

This products can apply to the SWB Doc NO. QA-3-04-005 of Environmental&Material Management Rules

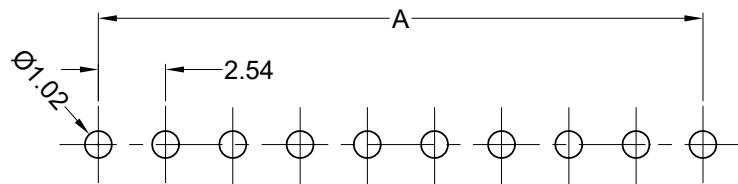
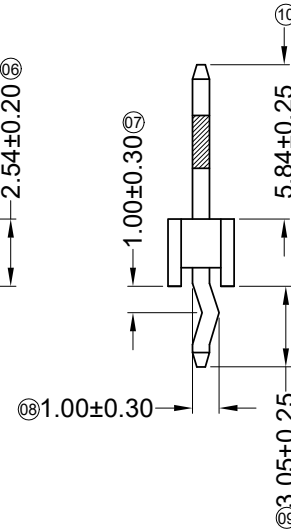
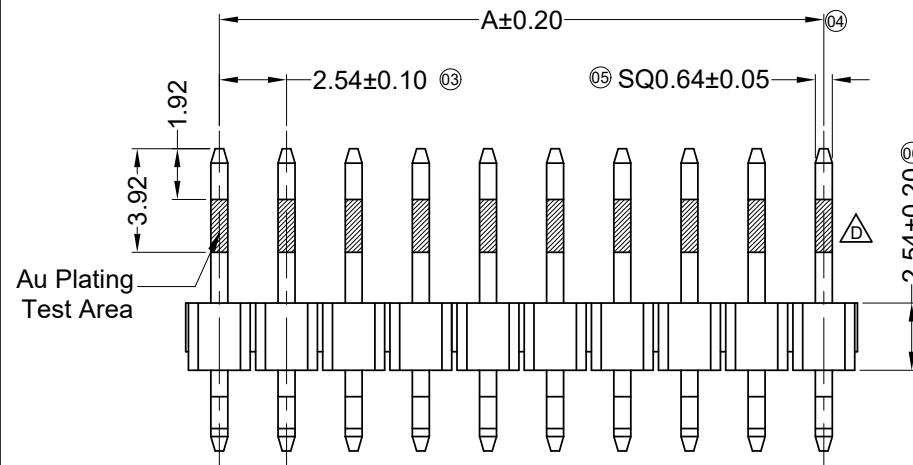
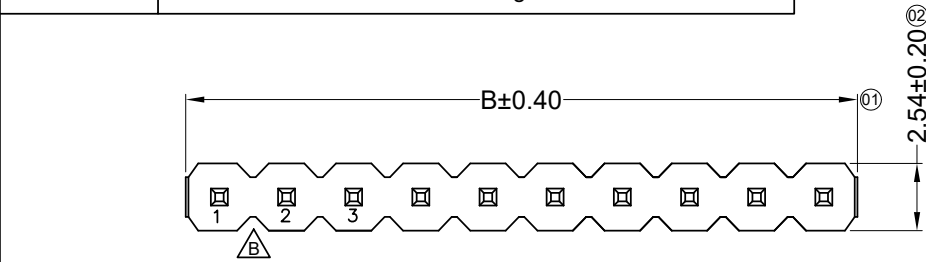
■ Specifications :

- Voltage rating: 250V AC / DC
- Current rating: 3A AC / DC
- Withstanding voltage: 800V AC/minute
- Temperature range: -25°C~+85°C
- Insulation resistance: ≥1000MΩ
- Contact resistance: ≤20mΩ
- After environmental testing: ≤30mΩ
- Material(Pin): Brass
- Mates With SWB Female Header: 6501FX

6501 W V -XX HF -4T XXX- T7

① ② ③ ④ ⑤ ⑥ ⑦ ⑧

- ① Series No.
- ② Category: W-wafer
- ③ Connector Type: V-180°
- ④ Row No.-Pin No Per Row: XX-Single row
- ⑤ Special NO.: HF-Halogen Free
- ⑥ Material: 4T-PA4T 94V-0
- ⑦ Plating Code: V01-Gold Flash, Ni 50u"Min. V15-Contact Area Au15u"Min. Other Area G/F Ni:50u"Min.
- ⑧ T7-L=5.84/2.54/3.05




Recommended P.C.B Layout  
General Tolerance±0.05

Poles	Dimensions(mm)		Poles	Dimensions(mm)	
	A	B		A	B
01	---	2.54	21	50.80	53.34
02	2.54	5.08	22	53.34	55.88
03	5.08	7.62	23	55.88	58.42
04	7.62	10.16	24	58.42	60.96
05	10.16	12.70	25	60.96	63.50
06	12.70	15.24	26	63.50	66.04
07	15.24	17.78	27	66.04	68.58
08	17.78	20.32	28	68.58	71.12
09	20.32	22.86	29	71.12	73.66
10	22.86	25.40	30	73.66	76.20
11	25.40	27.94	31	76.20	78.74
12	27.94	30.48	32	78.74	81.28
13	30.48	33.02	33	81.28	83.82
14	33.02	35.56	34	83.82	86.36
15	35.56	38.10	35	86.36	88.90
16	38.10	40.64	36	88.90	91.44
17	40.64	43.18	37	91.44	93.98
18	43.18	45.72	38	93.98	96.52
19	45.72	48.26	39	96.52	99.06
20	48.26	50.80	40	99.06	101.60

DATE	REV	ECN NO.	DESCRIPTION	MODIFY	APPROVAL
20-03-16	D	EN20200316005	Add Contact Area Gold Plating Area	Mali	Joshua
17-03-02	C		Add Gold Flash Specification	Joshua	Tang
16-09-23	B		Modity appearance	Joshua	Tang

GENERAL TOLERANCE	
.X	±0.35
.XX	±0.25
.XXX	±0.15
X.°	±2°
PROJECT	
⊕	□


**东莞市思索连接器有限公司**  
**SWB CONNECTORS CO.,LTD**

APPROVAL	CHECK	DRAWN	DATE
Robing	Joshua	Alan qin	2017/03/02

PART NO.				
6501WV-XXHF-4TV15-T7				
TITLE				
2.54mm Pin Header connectors				
UNIT	SCALE	SHEET	REV	NUMBER
mm	1:1	1/1	D	A-213

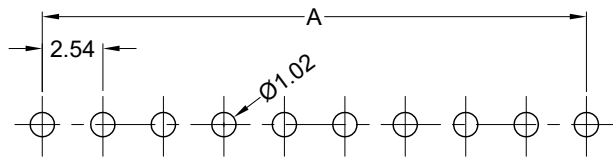
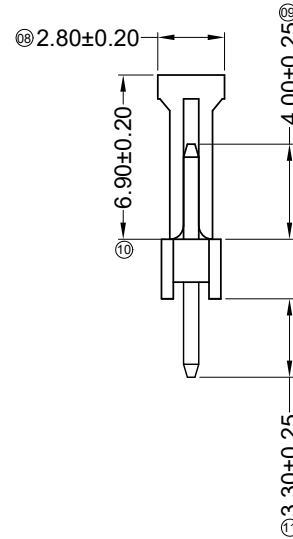
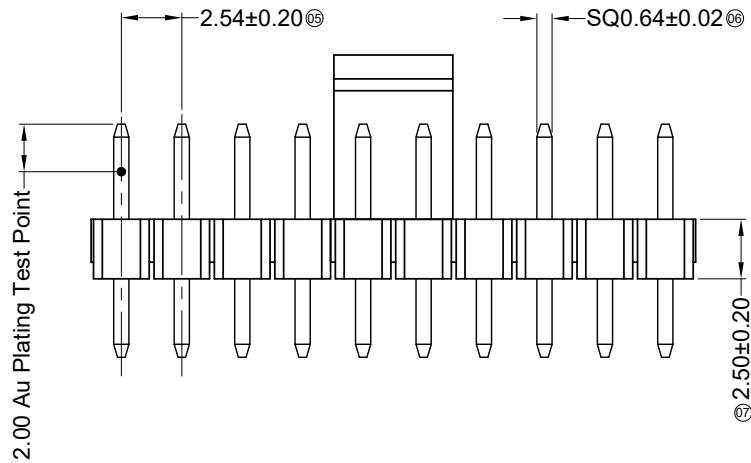
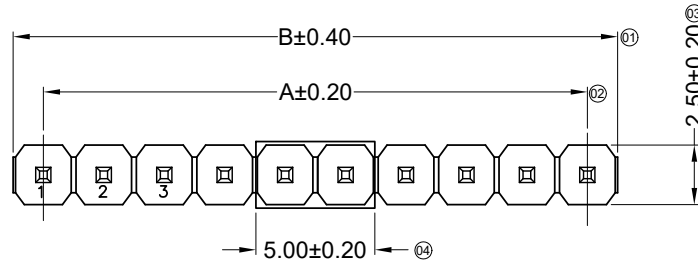


RoHS

This products can apply to the SWB Doc NO. QA-3-04-005 of Environmental&Material Management Rules

■ Specifications :

- Voltage rating: 250V AC / DC
- Current rating: 3A AC / DC
- Withstanding voltage: 800V AC/minute
- Temperature range: -25°C~+85°C
- Insulation resistance: ≥1000MΩ
- Contact resistance: ≤20mΩ
- After environmental testing: ≤30mΩ
- Material(Pin): Brass
- Material( CAP): LCP 94V-0 Black Halogen Free
- Mates With SWB Female Header: 6501FX



Recommended P.C.B Layout  
General Tolerance±0.05

6501 W V -XX L -LP XX

01 02 03 04 05 06 07

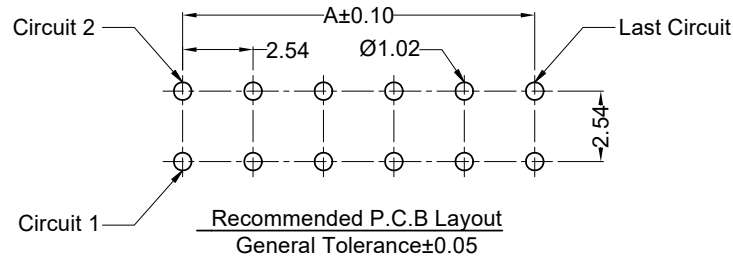
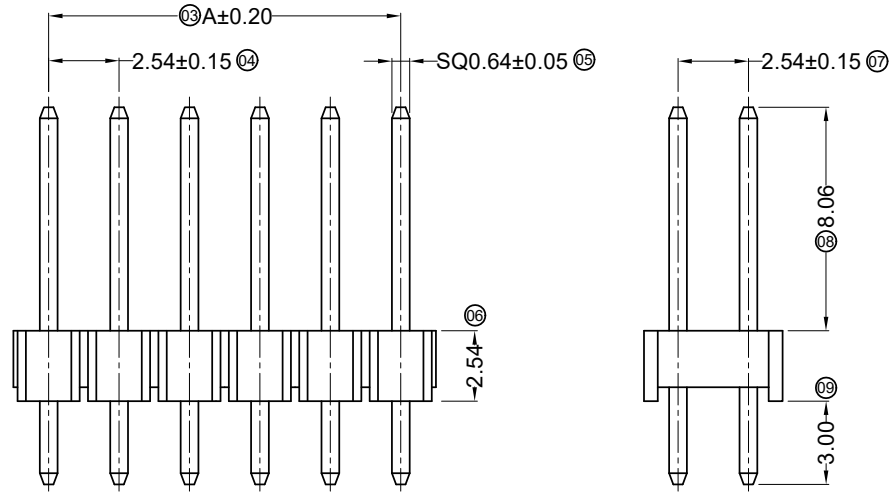
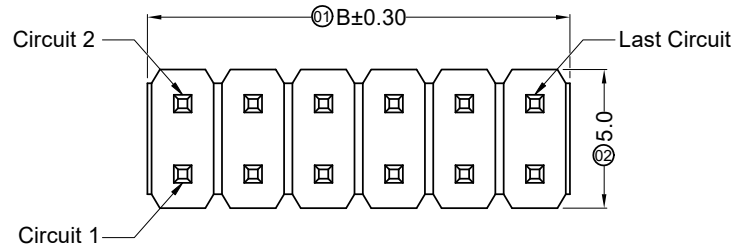
- ① Series No.
- ② Category: W-wafer
- ③ Connector Type: V-180°
- ④ Row No.-Pin No Per Row.: XX-Single row
- ⑤ Special NO.: L-4.00\*2.50\*3.30
- ⑥ Material: LP-LCP UL94V-0
- ⑦ Plating Code:  
V30-Contact Area 30u" Min. Solder Area Gold Flash Under Ni 50u"Min.

Poles	Dimensions(mm)		Poles	Dimensions(mm)	
	A	B		A	B
02	2.54	5.08	22	53.34	55.88
03	5.08	7.62	23	55.88	58.42
04	7.62	10.16	24	58.42	60.96
05	10.16	12.70	25	60.96	63.50
06	12.70	15.24	26	63.50	66.04
07	15.24	17.78	27	66.04	68.58
08	17.78	20.32	28	68.58	71.12
09	20.32	22.86	29	71.12	73.66
10	22.86	25.40	30	73.66	76.20
11	25.40	27.94	31	76.20	78.74
12	27.94	30.48	32	78.74	81.28
13	30.48	33.02	33	81.28	83.82
14	33.02	35.56	34	83.82	86.36
15	35.56	38.10	35	86.36	88.90
16	38.10	40.64	36	88.90	91.44
17	40.64	43.18	37	91.44	93.98
18	43.18	45.72	38	93.98	96.52
19	45.72	48.26	39	96.52	99.06
20	48.26	50.80	40	99.06	101.60
21	50.80	53.34			

					<p>GENERAL TOLERANCE</p> <p>.X ±0.35</p> <p>.XX ±0.25</p> <p>.XXX ±0.15</p> <p>X.° ±2°</p>				<p>东莞市思索连接器有限公司</p> <p>SWB CONNECTORS CO.,LTD</p>				<p>PART NO.</p> <p>6501WV-XXL-LPV30</p>																					
					<p>APPROVAL</p> <p>Robing</p>				<p>CHECK</p> <p>Robing</p>				<p>DRAWN</p> <p>Joshua</p>				<p>DATE</p> <p>2018/08/08</p>																	
					<p>PROJECT</p> <p>① ②</p>									<p>TITLE</p> <p>2.54mm Pin Header connectors</p>																				
										<p>UNIT</p> <p>mm</p>					<p>SCALE</p> <p>1:1</p>					<p>SHEET</p> <p>1/1</p>					<p>REV</p> <p>B</p>					<p>NUMBER</p> <p>A-213</p>				
2020-03-17	B	EN20200316005	Add gold-plated measuring points		Mali	Joshua																												
DATE	REV	ECN NO.	DESCRIPTION		MODIFY	APPROVAL																												

RoHS

This products can apply to the SWB Doc NO. QA-3-04-005 of Environmental&Material Management Rules



■ Specifications :


- Voltage rating: 250V AC / DC
- Current rating: 3A AC / DC
- Withstanding voltage: 800V AC/minute
- Temperature range: -40°C~+105°C
- Insulation resistance: ≥1000MΩ
- Contact resistance: ≤20mΩ
- After environmental testing: ≤30mΩ
- Material(Pin): Brass
- Mates With SWB Female Header:6501FX

6501 W V X-2\*XX X-6T V01 XX-01

① ②③④ ⑤ ⑥ ⑦ ⑧ ⑨ ⑩

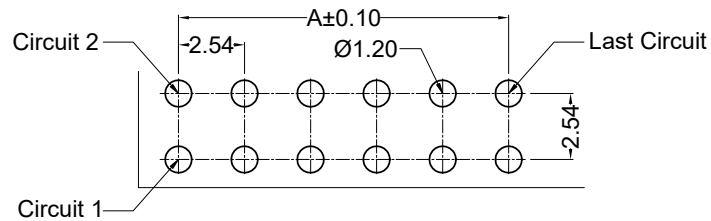
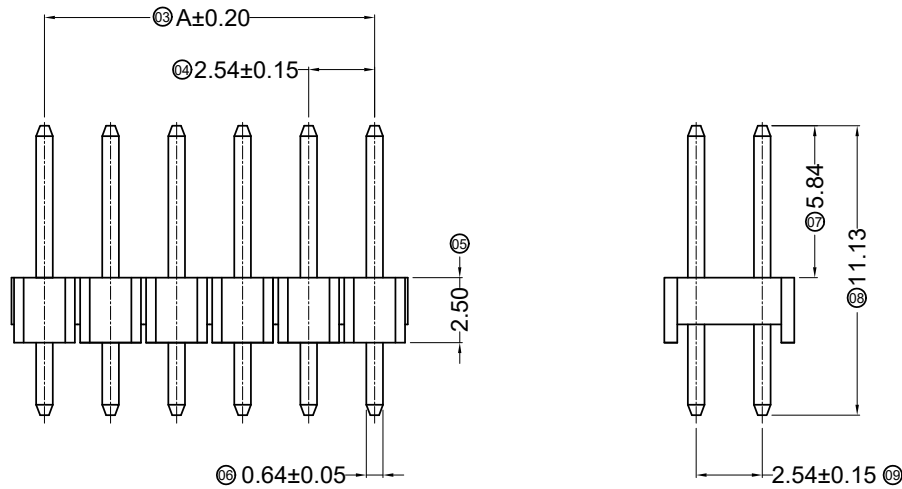
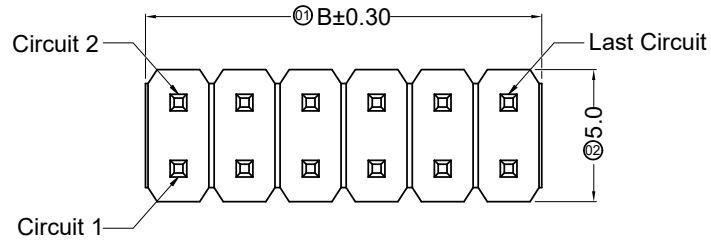
- ① Series No.
- ② Category: W-Wafer
- ③ Connector Type: V- 180°
- ④ Mounting Type: Blank-DIP
- ⑤ Row No.-Pin No Per Row: 2\*XX-2\*02P~2\*40P
- ⑥ Special No.: Blank-Ordinary
- ⑦ Material: 6T-PA6T 94V-0;
- ⑧ Plating Code: V01- Gold Flash
- ⑨ Color: Blank-Black color
- ⑩ 01-8.06/2.54/3.00

Poles	Dimensions(mm)		Poles	Dimensions(mm)		Poles	Dimensions(mm)	
	A	B		A	B		A	B
2*02	2.54	5.08	2*15	35.56	38.10	2*28	68.58	71.12
2*03	5.08	7.62	2*16	38.10	40.64	2*29	71.12	73.66
2*04	7.62	10.16	2*17	40.64	43.18	2*30	73.66	76.20
2*05	10.16	12.70	2*18	43.18	45.72	2*31	76.20	78.74
2*06	12.70	15.24	2*19	45.72	48.26	2*32	78.74	81.28
2*07	15.24	17.78	2*20	48.26	50.80	2*33	81.28	83.82
2*08	17.78	20.32	2*21	50.80	53.34	2*34	83.82	86.36
2*09	20.32	22.86	2*22	53.34	55.88	2*35	86.36	88.90
2*10	22.86	25.40	2*23	55.88	58.42	2*36	88.90	91.44
2*11	25.40	27.94	2*24	58.42	60.96	2*37	91.44	93.98
2*12	27.94	30.48	2*25	60.96	63.50	2*38	93.98	96.52
2*13	30.48	33.02	2*26	63.50	66.04	2*39	96.52	99.06
2*14	33.02	35.56	2*27	66.04	68.58	2*40	99.06	101.60

2020/03/16	F	EN20200316005	Update Drawing Frame, The Same ECR And ECN No	Mandy	Robing	GENERAL TOLERANCE .X ±0.30 .XX ±0.20 .XXX ±0.10 X.° ±2°	 东莞市思索连接器有限公司 SWB CONNECTORS CO.,LTD				PART NO.				
2015/08/04	E		Modify Title	Felix.Xie	Success						6501WV-2*XX-6TV01-01				
2015/05/12	D		Modify drawing frame format	jian.He	Success						TITLE				
											2.54 mm Pin Header connectors				
DATE	REV	ECN NO.	DESCRIPTION	MODIFY	APPROVAL	PROJECT	APPROVAL	CHECK	DRAWN	DATE	UNIT	SCALE	SHEET	REV	NUMBER
						Robing	Sun Kaibao	Liu Yan	2007/05/03	mm	1:1	1/1	F	A-268	

RoHS

This products can apply to the SWB Doc NO. QA-3-04-005 of Environmental&Material Management Rules




■ Specifications :

- Voltage rating: 250V AC / DC
- Current rating: 3A AC / DC
- Withstanding voltage: 800V AC/minute
- Temperature range: -40°C~+105°C
- Insulation resistance: ≥1000MΩ
- Contact resistance: ≤20mΩ
- After environmental testing: ≤30mΩ
- Material(Pin):Brass
- Mates With SWB Female Header:6501FX

6501 W V X-2\*XX X-6T V01 XX-02  
 ① ② ③ ④ ⑤ ⑥ ⑦ ⑧ ⑨ ⑩

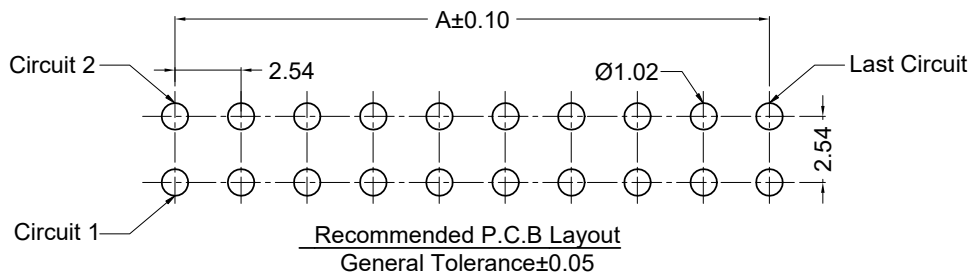
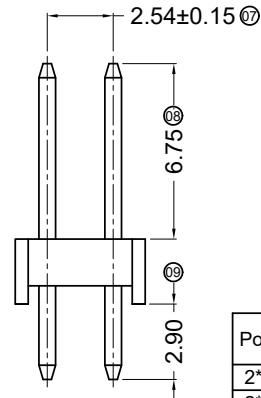
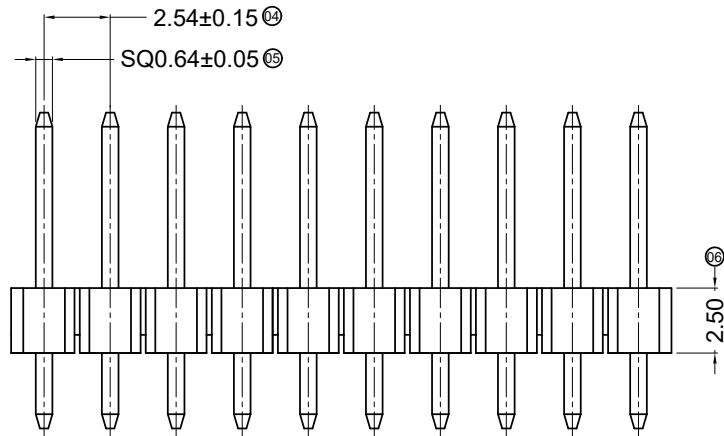
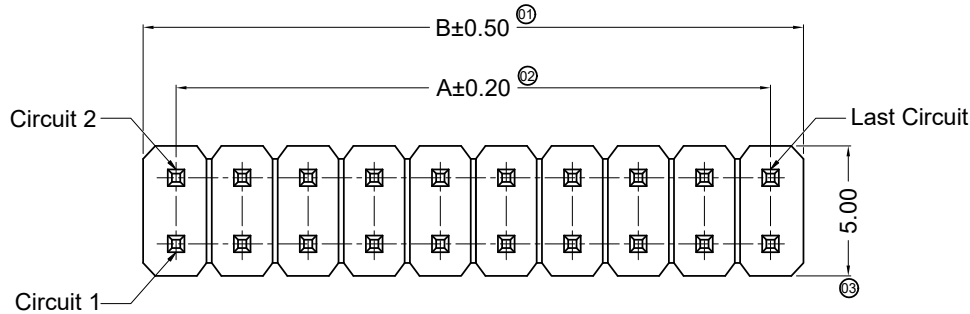
- ① Series No.
- ② Category: W-Wafer
- ③ Connector Type: V- 180°
- ④ Mouting Type: Blank-DIP
- ⑤ Row No.-Pin No Per Row: 2\*XX-2\*02P~2\*40P
- ⑥ Special No.: Blank-ordinary
- ⑦ Material: 6T-PA6T 94V-0;
- ⑧ Plating Code: V01- Gold Flash
- ⑨ Color: Blank-Black color
- ⑩ 02-11.13/5.84/2.50

Poles	Dimensions(mm)		Poles	Dimensions(mm)		Poles	Dimensions(mm)	
	A	B		A	B		A	B
2*02	2.54	5.08	2*15	35.56	38.10	2*28	68.58	71.12
2*03	5.08	7.62	2*16	38.10	40.64	2*29	71.12	73.66
2*04	7.62	10.16	2*17	40.64	43.18	2*30	73.66	76.20
2*05	10.16	12.70	2*18	43.18	45.72	2*31	76.20	78.74
2*06	12.70	15.24	2*19	45.72	48.26	2*32	78.74	81.28
2*07	15.24	17.78	2*20	48.26	50.80	2*33	81.28	83.82
2*08	17.78	20.32	2*21	50.80	53.34	2*34	83.82	86.36
2*09	20.32	22.86	2*22	53.34	55.88	2*35	86.36	88.90
2*10	22.86	25.40	2*23	55.88	58.42	2*36	88.90	91.44
2*11	25.40	27.94	2*24	58.42	60.96	2*37	91.44	93.98
2*12	27.94	30.48	2*25	60.96	63.50	2*38	93.98	96.52
2*13	30.48	33.02	2*26	63.50	66.04	2*39	96.52	99.06
2*14	33.02	35.56	2*27	66.04	68.58	2*40	99.06	101.60

						 <b>东莞市思索连接器有限公司</b> SWB CONNECTORS CO.,LTD				PART NO. 6501WV-2*XX-6TV01-02				
						APPROVAL    CHECK    DRAWN    DATE				TITLE 2.54 mm Pin Header connectors				
2020/03/16	B	EN20200316005	Update Drawing Frame	Mandy	Robing	Robing	Joshua	Jack	2018/04/09	UNIT	SCALE	SHEET	REV	NUMBER
DATE	REV	ECN NO.	DESCRIPTION	MODIFY	APPROVAL	PROJECT				mm	1 : 1	1/1	B	A-268

RoHS

This products can apply to the SWB Doc NO. QA-3-04-005 of Environmental&Material Management Rules



■ Specifications :

- Voltage rating: 250V AC / DC
- Current rating: 3A AC / DC
- Withstanding voltage: 800V AC/minute
- Temperature range: -40°C~+105°C
- Insulation resistance: ≥1000MΩ
- Contact resistance: ≤20mΩ
- After environmental testing: ≤30mΩ
- Material(Pin): Brass
- Mates With SWB Female Header: 6501FX

6501 W V X-2\*XX X-6T V01 XX-07  
① ②③④ ⑤ ⑥ ⑦ ⑧ ⑨ ⑩

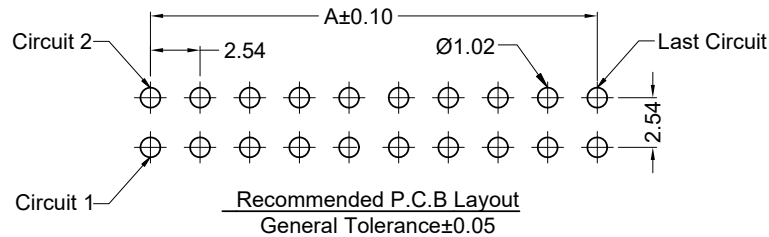
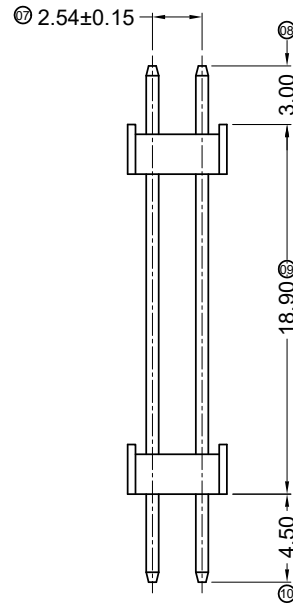
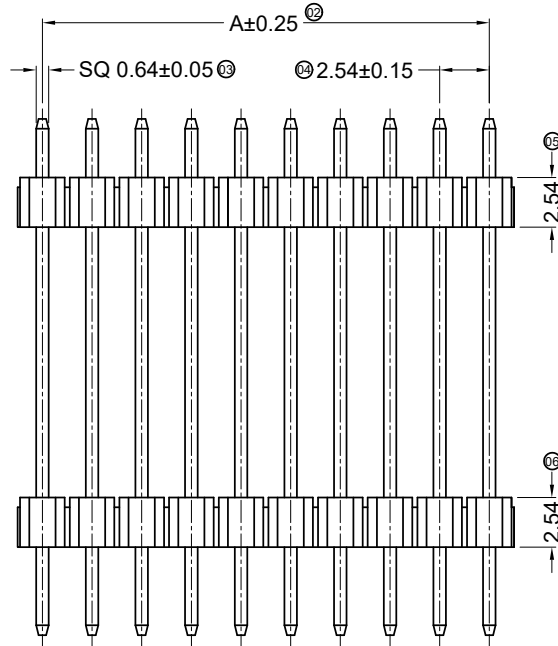
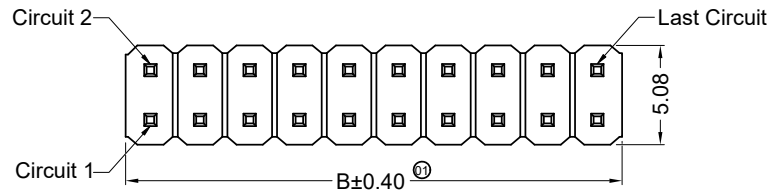
- ① Series No.
- ② Category: W-Wafer
- ③ Connector Type: V- 180°
- ④ Mouting Type: Blank-DIP
- ⑤ Row No.-Pin No Per Row: 2\*XX-2\*02P~2\*40P
- ⑥ Special No.: Blank-Ordinary
- ⑦ Material: 6T-PA6T 94V-0;
- ⑧ Plating Code: V01- Gold Flash
- ⑨ Color: Blank-Black Color
- ⑩ 07-6.75/2.50/2.90

Poles	Dimensions(mm)		Poles	Dimensions(mm)		Poles	Dimensions(mm)	
	A	B		A	B		A	B
2*02	2.54	5.08	2*15	35.56	38.10	2*28	68.58	71.12
2*03	5.08	7.62	2*16	38.10	40.64	2*29	71.12	73.66
2*04	7.62	10.16	2*17	40.64	43.18	2*30	73.66	76.20
2*05	10.16	12.70	2*18	43.18	45.72	2*31	76.20	78.74
2*06	12.70	15.24	2*19	45.72	48.26	2*32	78.74	81.28
2*07	15.24	17.78	2*20	48.26	50.80	2*33	81.28	83.82
2*08	17.78	20.32	2*21	50.80	53.34	2*34	83.82	86.36
2*09	20.32	22.86	2*22	53.34	55.88	2*35	86.36	88.90
2*10	22.86	25.40	2*23	55.88	58.42	2*36	88.90	91.44
2*11	25.40	27.94	2*24	58.42	60.96	2*37	91.44	93.98
2*12	27.94	30.48	2*25	60.96	63.50	2*38	93.98	96.52
2*13	30.48	33.02	2*26	63.50	66.04	2*39	96.52	99.06
2*14	33.02	35.56	2*27	66.04	68.58	2*40	99.06	101.60

					GENERAL TOLERANCE .X ±0.30 .XX ±0.20 .XXX ±0.10 X.° ±2°				东莞市思索连接器有限公司 SWB CONNECTORS CO.,LTD				PART NO. 6501WV-2*XX-6TV01-07												
					APPROVAL Robing				CHECK Alan Qin				DRAWN Mandy				DATE 2020/03/16				TITLE 2.54 mm Pin Header connectors				
DATE	REV	ECN NO.	DESCRIPTION	MODIFY	APPROVAL	PROJECT		UNIT		SCALE		SHEET		REV		NUMBER									
									mm	1:1	1/1	A	A-268												

RoHS

This products can apply to the SWB Doc NO. QA-3-04-005 of Environmental&Material Management Rules



■ Specifications:

- Voltage rating: 250V AC / DC
- Current rating: 3A AC / DC
- Withstanding voltage: 800V AC/minute
- Temperature range: -40°C~+105°C
- Insulation resistance: ≥1000MΩ
- Contact resistance: ≤20mΩ
- After environmental testing: ≤30mΩ
- Material(Pin): Brass
- Mates With SWB Female Header: 6501FX

6501 W V X - 2\*XX H2 - 6T V01XX -01  
① ② ③ ④ ⑤ ⑥ ⑦ ⑧ ⑨ ⑩

- ① Series No.
- ② Category: W-Wafer
- ③ Connector Type: V- 180°
- ④ Mounting Type: Blank-DIP
- ⑤ Row No.-Pin No Per Row: 2\*XX-2\*02P~2\*40P
- ⑥ Special No.: H2-Double plastic
- ⑦ Material: 6T-PA6T 94V-0
- ⑧ Plating Code: V01-Gold Flash
- ⑨ Color: Blank-Black
- ⑩ 01-3.00/18.90/4.50

Poles	Dimensions(mm)		Poles	Dimensions(mm)		Poles	Dimensions(mm)	
	A	B		A	B		A	B
2*02	2.54	5.08	2*15	35.56	38.10	2*28	68.58	71.12
2*03	5.08	7.62	2*16	38.10	40.64	2*29	71.12	73.66
2*04	7.62	10.16	2*17	40.64	43.18	2*30	73.66	76.20
2*05	10.16	12.70	2*18	43.18	45.72	2*31	76.20	78.74
2*06	12.70	15.24	2*19	45.72	48.26	2*32	78.74	81.28
2*07	15.24	17.78	2*20	48.26	50.80	2*33	81.28	83.82
2*08	17.78	20.32	2*21	50.80	53.34	2*34	83.82	86.36
2*09	20.32	22.86	2*22	53.34	55.88	2*35	86.36	88.90
2*10	22.86	25.40	2*23	55.88	58.42	2*36	88.90	91.44
2*11	25.40	27.94	2*24	58.42	60.96	2*37	91.44	93.98
2*12	27.94	30.48	2*25	60.96	63.50	2*38	93.98	96.52
2*13	30.48	33.02	2*26	63.50	66.04	2*39	96.52	99.06
2*14	33.02	35.56	2*27	66.04	68.58	2*40	99.06	101.60

DATE	REV	ECN NO.	DESCRIPTION	MODIFY	APPROVAL
1					
2					
3					
4					
5					

GENERAL TOLERANCE
.X ±0.30
.XX ±0.20
.XXX ±0.10
X.° ±2°
PROJECT

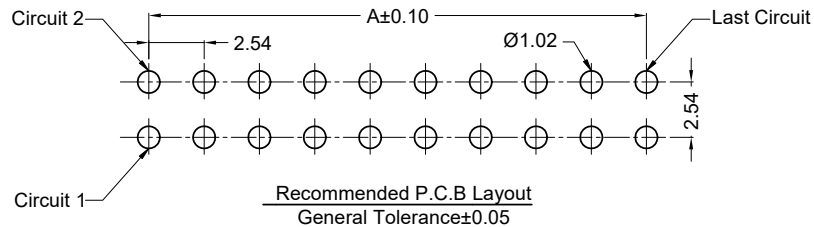
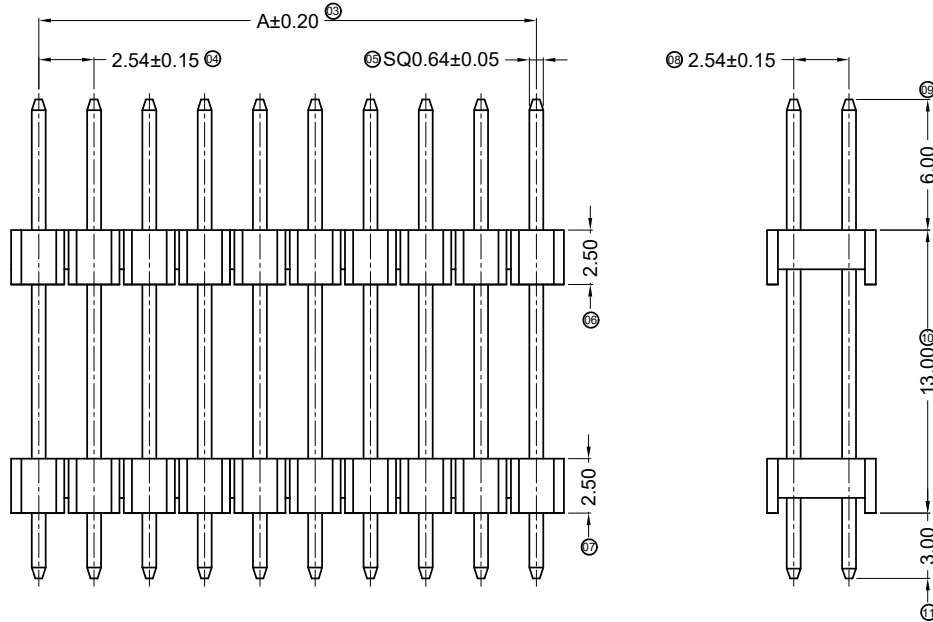
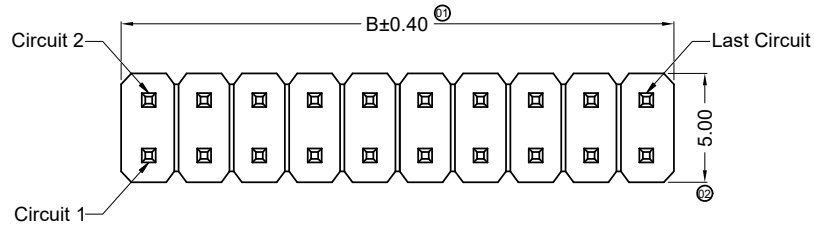
东莞市思索连接器有限公司  
SWB CONNECTORS CO.,LTD

APPROVAL	CHECK	DRAWN	DATE
Robing	Alan Qin	Mandy	2019/09/18

PART NO. 6501WV-2*XXH2-6TV01-01				
TITLE 2.54mm Pin Header connectors				
UNIT	SCALE	SHEET	REV	NUMBER
mm	1:1	1/1	A	A-268

RoHS

This products can apply to the SWB Doc NO. QA-3-04-005 of Environmental&Material Management Rules




■ Specifications:

- Voltage rating: 250V AC / DC
- Current rating: 3A AC / DC
- Withstanding voltage: 800V AC/minute
- Temperature range: -40°C~+105°C
- Insulation resistance: ≥1000MΩ
- Contact resistance: ≤20mΩ
- After environmental testing: ≤30mΩ
- Material(Pin): Brass
- Mates With SWB Female Header: 6501FX

6501 W V X-2\*XX H2-6T V01 XX-02  
 ① ② ③ ④ ⑤ ⑥ ⑦ ⑧ ⑨ ⑩

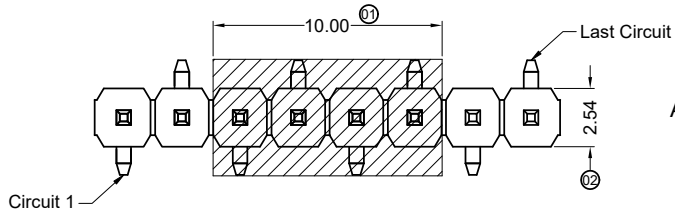
- ① Series No.
- ② Category: W-Wafer
- ③ Connector Type: V- 180°
- ④ Mouting Type: Blank-DIP
- ⑤ Row No.-Pin No Per Row: 2\*XX-2\*02P~2\*40P
- ⑥ Special No.: H2-Double plastic
- ⑦ Material: 6T-PA6T 94V-0
- ⑧ Plating Code: V01- Gold Flash
- ⑨ Color: Blank-Black Color
- ⑩ 02-6.00/13.00/3.00

Poles	Dimensions(mm)		Poles	Dimensions(mm)		Poles	Dimensions(mm)	
	A	B		A	B		A	B
2*02	2.54	5.08	2*15	35.56	38.10	2*28	68.58	71.12
2*03	5.08	7.62	2*16	38.10	40.64	2*29	71.12	73.66
2*04	7.62	10.16	2*17	40.64	43.18	2*30	73.66	76.20
2*05	10.16	12.70	2*18	43.18	45.72	2*31	76.20	78.74
2*06	12.70	15.24	2*19	45.72	48.26	2*32	78.74	81.28
2*07	15.24	17.78	2*20	48.26	50.80	2*33	81.28	83.82
2*08	17.78	20.32	2*21	50.80	53.34	2*34	83.82	86.36
2*09	20.32	22.86	2*22	53.34	55.88	2*35	86.36	88.90
2*10	22.86	25.40	2*23	55.88	58.42	2*36	88.90	91.44
2*11	25.40	27.94	2*24	58.42	60.96	2*37	91.44	93.98
2*12	27.94	30.48	2*25	60.96	63.50	2*38	93.98	96.52
2*13	30.48	33.02	2*26	63.50	66.04	2*39	96.52	99.06
2*14	33.02	35.56	2*27	66.04	68.58	2*40	99.06	101.60

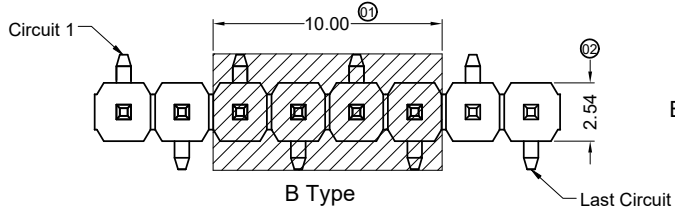
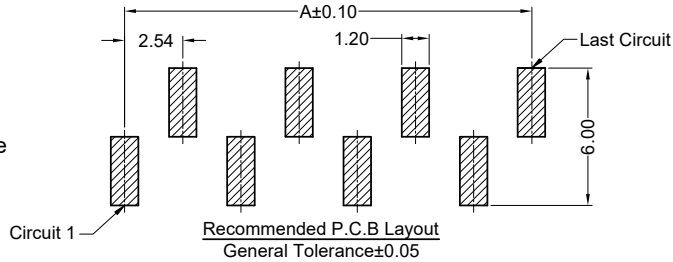
						 <b>东莞市思索连接器有限公司</b> SWB CONNECTORS CO.,LTD				PART NO. 6501WV-2*XXH2-6TV01-02				
						APPROVAL    CHECK    DRAWN    DATE				TITLE 2.54 mm Pin Header connectors				
2020/03/16	B	EN20200316005	Update Drawing Frame	Mandy	Robing	Robing	Alan	Mandy	2019/10/11	UNIT	SCALE	SHEET	REV	NUMBER
DATE	REV	ECN NO.	DESCRIPTION	MODIFY	APPROVAL	PROJECT				mm	1:1	1/1	B	A-268

RoHS

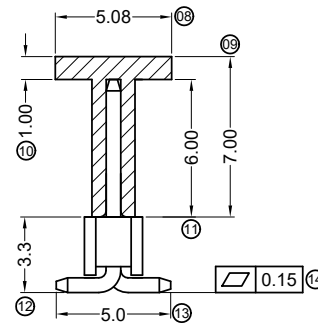
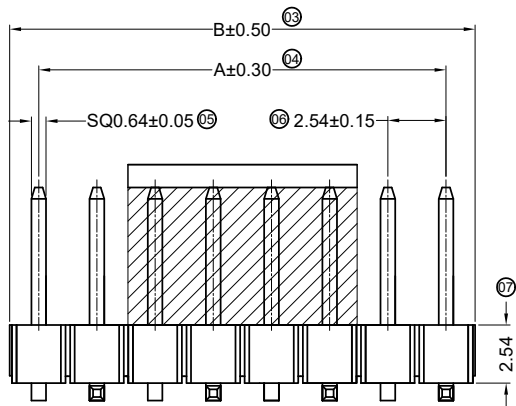
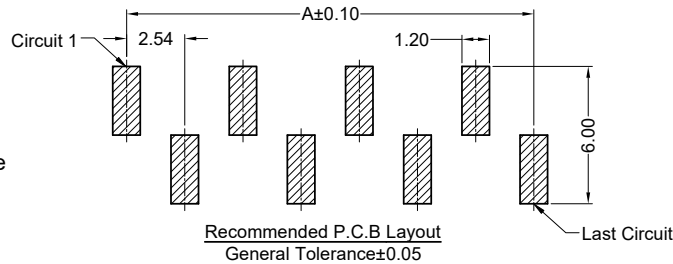
This products can apply to the SWB Doc NO. QA-3-04-005 of Environmental&Material Management Rules



A Type



B Type




Specifications :

- Voltage rating: 250V AC / DC
- Current rating: 3A AC / DC
- Withstanding voltage: 800V AC/minute
- Temperature range: -40°C~+105°C
- Insulation resistance: ≥1000MΩ
- Contact resistance: ≤20mΩ
- After environmental testing: ≤30mΩ
- Material(Pin): Brass
- Mates With SWB Female Header: 6501FX

6501 W V S - XX XX - 6T V01 XX -02X  
① ②③④ ⑤ ⑥ ⑦ ⑧ ⑨ ⑩

- ① Series No.
- ② Category: W-Wafer
- ③ Connector Type: V- Straight 180°
- ④ Mounting Type: S-SMT
- ⑤ Row No.-Pin No Per Row: XX-02P~40P
- ⑥ Special No.: Blank-Ordinary
- ⑦ Material: 6T-PA6T 94V-0
- ⑧ Plating Code: V01-Gold Flash
- ⑨ Color: Blank-Black Color
- ⑩ 02A-6.00/2.54/5.00mm ,A type  
02B-6.00/2.54/5.00mm ,B type

Poles	Dimensions(mm)		Poles	Dimensions(mm)	
	A	B		A	B
02	2.54	5.08	22	53.34	55.08
03	5.08	7.62	23	55.88	58.42
04	7.62	10.16	24	58.42	60.96
05	10.16	12.70	25	60.96	63.50
06	12.70	15.24	26	63.50	66.04
07	15.24	17.78	27	66.04	68.58
08	17.78	20.32	28	68.58	71.12
09	20.32	22.86	29	71.12	73.66
10	22.86	25.40	30	73.66	76.20
11	25.40	27.94	31	76.20	78.74
12	27.94	30.48	32	78.74	81.28
13	30.48	33.02	33	81.28	83.82
14	33.02	35.56	34	83.82	86.36
15	35.56	38.10	35	86.36	88.90
16	38.10	40.64	36	88.90	91.44
17	40.64	43.18	37	91.44	93.98
18	43.18	45.72	38	93.98	96.52
19	45.72	48.26	39	96.52	99.06
20	48.26	50.80	40	99.06	101.60
21	50.80	53.34			

					GENERAL TOLERANCE		 <b>东莞市思索连接器有限公司</b> SWB CONNECTORS CO.,LTD				PART NO. 6501WVS-XX-6TV01-02X					
					.X ±0.30						TITLE 2.54 mm Pin Header connectors					
					.XX ±0.20						APPROVAL					
					.XXX ±0.10						CHECK		DRAWN		DATE	
					X.° ±2°						Alan Qin		Mandy		2019/09/18	
2020/03/16	B	EN20200316005	Update Drawing Frame	Mandy	Robing	PROJECT		Roving		Alan Qin		Mandy		2019/09/18		
DATE	REV	ECN NO.	DESCRIPTION	MODIFY	APPROVAL	PROJECT		Roving		Alan Qin		Mandy		2019/09/18		
					UNIT		SCALE		SHEET		REV		NUMBER			
					mm		1 : 1		1/1		B		A-195			

RoHS

This products can apply to the SWB Doc NO. QA-3-04-005 of Environmental&Material Management Rules

■ Specifications :

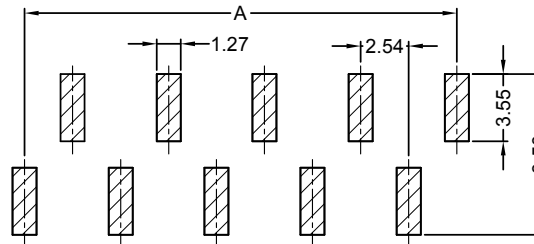
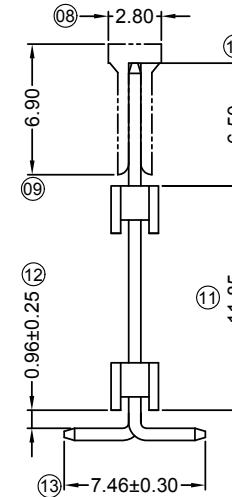
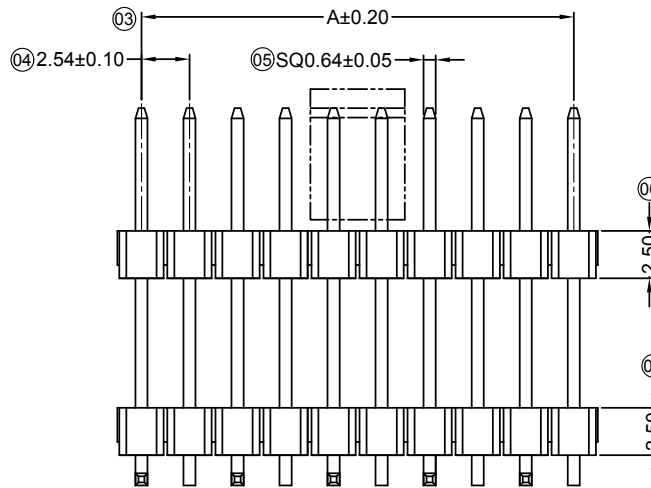
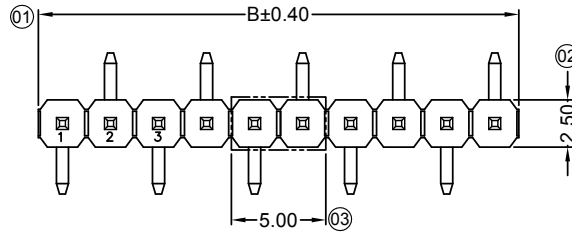
- Voltage rating: 250V AC / DC
- Current rating: 3A AC / DC
- Withstanding voltage: 1000V AC/minute
- Temperature range: -40°C~+105°C
- Insulation resistance: ≥1000MΩ
- Contact resistance: ≤20mΩ
- After environmental testing: ≤30mΩ
- Material(Pin): Brass
- Material(CAP): PA6T Black Halogen Free
- Mates With SWB Wafer: 6501FX

6501 W V S - XX H2 HF- 6T XX X XX -03

① ② ③ ④ ⑤ ⑥ ⑦ ⑧ ⑨ ⑩ ⑪ ⑫

- ① Series No.
- ② Category: W- Wafer
- ③ Connector Type: V-180°
- ④ Mounting Type: S-SMT
- ⑤ Row No.-Pin No. : XX-Single row
- ⑥ Special No.:H2-Double Plastic
- ⑦ HF-Halogen Free
- ⑧ Material: 6T-PA6T UL94V-0
- ⑨ Plating Category:  
V01-All Area Gold Flash ; Ni: 50u" Min.  
SW-Matte Tin100u" Min.; Ni: 50u" Min.
- ⑩ C-With CAP
- ⑪ Color: Balnk-Black
- ⑫ 03-6.50/11.85/7.46

Poles	Dimensions(mm)		Poles	Dimensions(mm)	
	A	B		A	B
02	2.54	5.08	15	35.56	38.10
03	5.08	7.62	16	38.10	40.64
04	7.62	10.16	17	40.64	43.18
05	10.16	12.70	18	43.18	45.72
06	12.70	15.24	19	45.72	48.26
07	15.24	17.78	20	48.26	50.80
08	17.78	20.32	21	50.80	53.34
09	20.32	22.86	22	53.34	55.88
10	22.86	25.40	23	55.88	58.42
11	25.40	27.94	24	58.42	60.96
12	27.94	30.48	25	60.96	63.50
13	30.48	33.02			
14	33.02	35.56			



Recommended P.C.B Layout  
General Tolerance±0.05

GENERAL TOLERANCE

- .X ±0.30
- .XX ±0.20
- .XXX ±0.10
- X.° ±2°



东莞市思索连接器有限公司

SWB CONNECTORS CO.,LTD

PART NO.

6501WVS-XXH2HF-6TXXXXX-03

TITLE

2.54mm PIN Header Connectors

APPROVAL CHECK DRAWN DATE

Robing Robing Joshua 2020/04/30

UNIT SCALE SHEET REV NUMBER

mm 1:1 1/1 A A-213

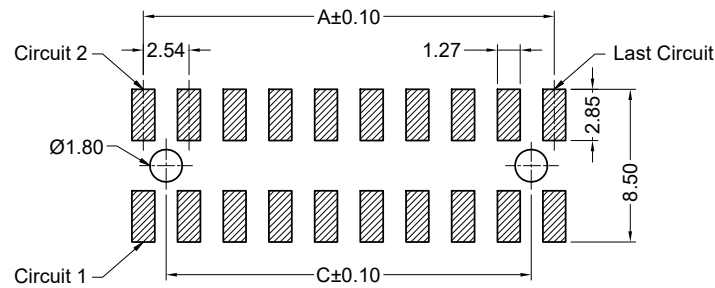
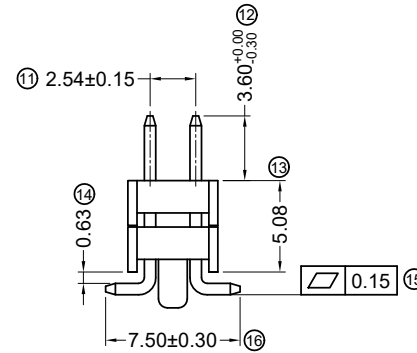
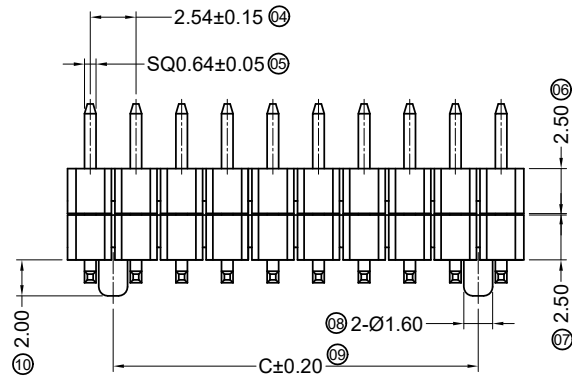
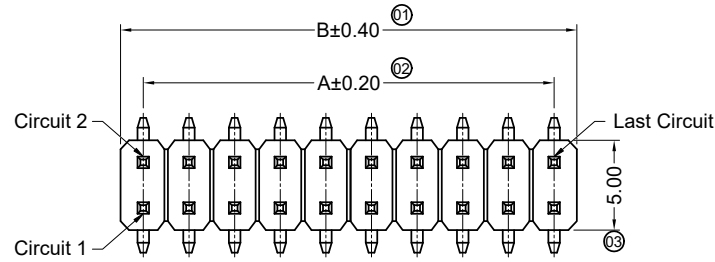
DATE	REV	ECN NO.	DESCRIPTION	MODIFY	APPROVAL
1					
2					
3					

1 2 3 4 5 6 7 8



RoHS

This products can apply to the SWB Doc NO. QA-3-04-005 of Environmental&Material Management Rules



Recommended P.C.B Layout  
General Tolerance±0.05

■ Specifications :

- Voltage rating: 250V AC / DC
- Current rating: 3A AC / DC
- Withstanding voltage: 800V AC/minute
- Temperature range: -40°C~+105°C
- Insulation resistance: ≥1000MΩ
- Contact resistance: ≤20mΩ
- After environmental testing: ≤30mΩ
- Material(Pin): Brass
- Mates With SWB Female Header: 6501FX

6501 W V S - 2\*XX H2 P - XX V01 XX - 01

① ②③④ ⑤ ⑥ ⑦ ⑧ ⑨ ⑩

- ① Series No.
- ② Category: W-wafer
- ③ Connector Type: V- Straight 180°
- ④ Mounting Type: S-SMT
- ⑤ Row No.-Pin No Per Row: 2\*XX-2\*02P~2\*40P
- ⑥ Special No.: H2-Double plastic,P-Wiht Peg
- ⑦ Material: 6T-PA6T 94V-0 ; 9T-PA9T 94V-0
- ⑧ Plating Code: V01- Gold Flash
- ⑨ Color: Blank-Black Color
- ⑩ 01-3.60/2.50/7.50

Poles	Dimensions(mm)			Poles	Dimensions(mm)		
	A	B	C		A	B	C
2*02	2.54	5.08		2*22	53.34	55.88	50.80
2*03	5.08	7.62	2.54	2*23	55.88	58.42	53.34
2*04	7.62	10.16	5.08	2*24	58.42	60.96	55.88
2*05	10.16	12.70	7.62	2*25	60.96	63.50	58.42
2*06	12.70	15.24	10.16	2*26	63.50	66.04	60.96
2*07	15.24	17.78	12.70	2*27	66.04	68.58	63.50
2*08	17.78	20.32	15.24	2*28	68.58	71.12	66.04
2*09	20.32	22.86	17.78	2*29	71.12	73.66	68.58
2*10	22.86	25.40	20.32	2*30	73.66	76.20	71.12
2*11	25.40	27.94	22.86	2*31	76.20	78.74	73.66
2*12	27.94	30.48	25.40	2*32	78.74	81.28	76.20
2*13	30.48	33.02	27.94	2*33	81.28	83.82	78.74
2*14	33.02	35.56	30.48	2*34	83.82	86.36	81.28
2*15	35.56	38.10	33.02	2*35	86.36	88.90	83.82
2*16	38.10	40.64	35.56	2*36	88.90	91.44	86.36
2*17	40.64	43.18	38.10	2*37	91.44	93.98	88.90
2*18	43.18	45.72	40.64	2*38	93.98	96.52	91.44
2*19	45.72	48.26	43.18	2*39	96.52	99.06	93.98
2*20	48.26	50.80	45.72	2*40	99.06	101.60	96.52
2*21	50.80	53.34	48.26				

					<p>GENERAL TOLERANCE</p> <p>.X ±0.30</p> <p>.XX ±0.20</p> <p>.XXX ±0.10</p> <p>/</p>				<p>APPROVAL</p> <p>Robing</p>				<p>CHECK</p> <p>Alan Qin</p>				<p>DRAWN</p> <p>Mandy</p>				<p>DATE</p> <p>2020/03/16</p>																																																					
					<p>PROJECT</p>												<p>PART NO.</p> <p>6501WVS-2*XXH2P-XXV01-01</p>																																																									
																	<p>TITLE</p> <p>2.54mm Pin Header connectors</p>																																																									
DATE					REV					ECN NO.					DESCRIPTION					MODIFY					APPROVAL					UNIT					SCALE					SHEET					REV					NUMBER																								
1					2					3					4					5					6					7					8					A					A					A					A					A					A					A				



东莞市思索连接器有限公司

SWB CONNECTORS CO.,LTD

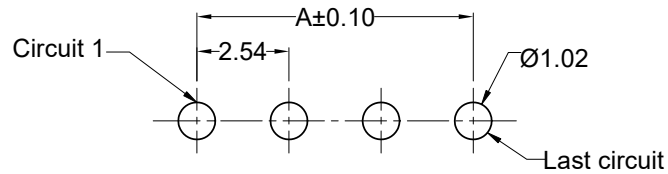
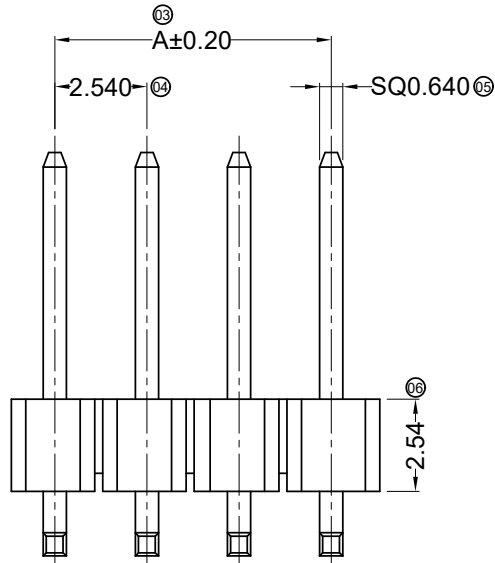
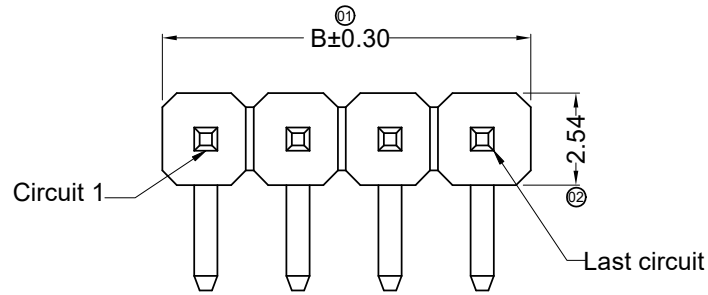
PART NO.  
6501WVS-2\*XXH2P-XXV01-01

TITLE  
2.54mm Pin Header connectors

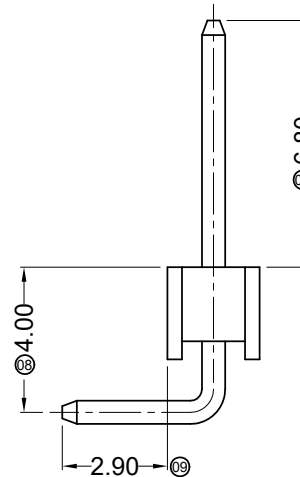
UNIT: mm  
SCALE: 1:1  
SHEET: 1/1  
REV: A  
NUMBER: A-268

RoHS

This products can apply to the SWB Doc NO. QA-3-04-005 of Environmental&Material Management Rules



Recommended P.C.B Layout  
General Tolerance±0.05



■ Specifications :

- Voltage rating: 250V AC / DC
- Current rating: 3A AC / DC
- Withstanding voltage: 800V AC/minute
- Temperature range: -40°C~+105°C
- Insulation resistance: ≥1000MΩ
- Contact resistance: ≤20mΩ
- After environmental testing: ≤30mΩ
- Material(Pin): Brass
- Mates With SWB Female Header:6501FX

6501 W R - XX X - 6T V01 XX- B  
① ② ③ ④ ⑤ ⑥ ⑦ ⑧ ⑨

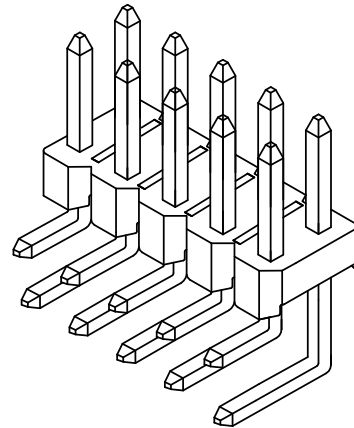
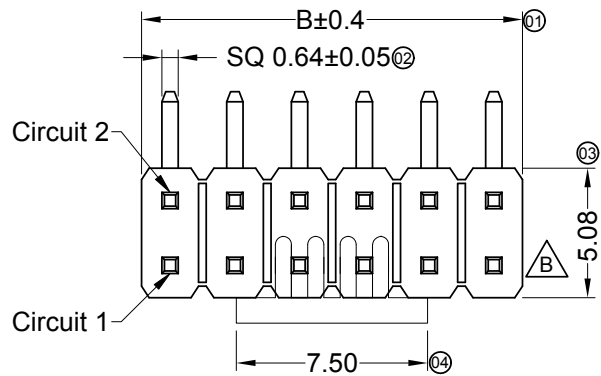
- ① Series No.
- ② Category: W-wafer
- ③ Connector Type:R-90°
- ④ Row No.-Pin No Per Row: XX-Single row
- ⑤ Special No.: Blank-ordinary
- ⑥ Material: 6T-PA6T 94V-0
- ⑦ Plating Code: V01- Gold Flash
- ⑧ Color: Blank-Black Color
- ⑩ B-6.80/2.54/2.90

Poles	Dimensions (mm)		Poles	Dimensions (mm)	
	A	B		A	B
01	--	2.54	21	50.80	53.34
02	2.54	5.08	22	53.34	55.88
03	5.08	7.62	23	55.88	58.42
04	7.62	10.16	24	58.42	60.96
05	10.16	12.70	25	60.96	63.50
06	12.70	15.24	26	63.50	66.04
07	15.24	17.78	27	66.04	68.58
08	17.78	20.32	28	68.58	71.12
09	20.32	22.86	29	71.12	73.66
10	22.86	25.40	30	73.66	76.20
11	25.40	27.94	31	76.20	78.74
12	27.94	30.48	32	78.74	81.28
13	30.48	33.02	33	81.28	83.82
14	33.02	35.56	34	83.82	86.36
15	35.56	38.10	35	86.36	88.90
16	38.10	40.64	36	88.90	91.44
17	40.64	43.18	37	91.44	93.98
18	43.18	45.72	38	93.98	96.52
19	45.72	48.26	39	96.52	99.06
20	48.26	50.80	40	99.06	101.60

						<b>东莞市思索连接器有限公司</b> <b>SWB CONNECTORS CO.,LTD</b>				<b>PART NO.</b> 6501WR-XX-6TV01-B				
						<b>APPROVAL</b> <b>CHECK</b> <b>DRAWN</b> <b>DATE</b>				<b>TITLE</b> 2.54 mm Pin Header connectors				
2020/03/16	B	EN20200316005	Update Drawing Frame	Mandy	Robing	Smak	Joshua	Luna	2013/08/16	UNIT	SCALE	SHEET	REV	NUMBER
DATE	REV	ECN NO.	DESCRIPTION	MODIFY	APPROVAL	PROJECT				mm	1:1	1/1	B	A-268

RoHS

This products can apply to the SWB Doc NO. QA-3-04-005 of Environmental&Material Management Rules

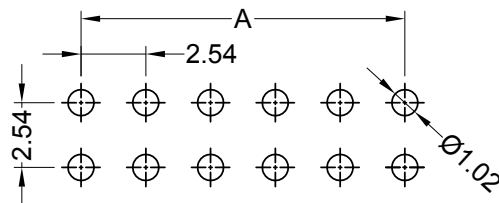
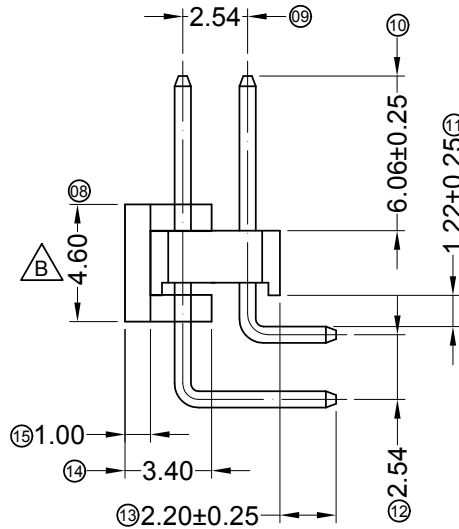
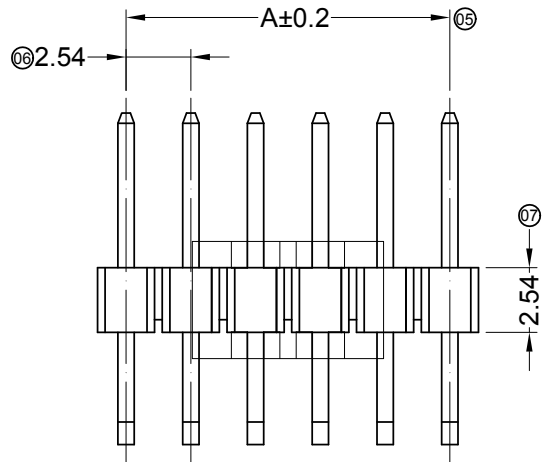


Specifications :

- Voltage rating: 250V AC / DC
- Current rating: 3A AC / DC
- Withstanding voltage: 800V AC/minute
- Temperature range: -25°C~+85°C
- Insulation resistance: ≥1000MΩ
- Contact resistance: ≤20mΩ
- After environmental testing: ≤30mΩ
- Material(Pin): Brass
- Material(CAP): LCP 94V-0 Black Halogen Free
- Mates With SWB 6501FX

6501 W R X-2\*XX -LP XX XX -V  
① ②③④ ⑤ ⑥ ⑦ ⑧ ⑨

- ① Series No.
- ② Category: W-Wafer
- ③ Connector Type: R- 90°
- ④ Mounting Type: Blank-DIP
- ⑤ Row No.-Pin No.: 2\*XX-Double Row
- ⑥ Material: LP-LCP 94V-0 Halogen Free
- ⑦ Plating Category:  
SW-Matte Tin 100u" Min. ; Ni 50u" Min.  
V01-Contact Area Gold G/F ; Solder Area G/F ; Ni 50u" Min.
- ⑧ Color: Blank-Black color
- ⑨ V-6.06/2.54/2.20



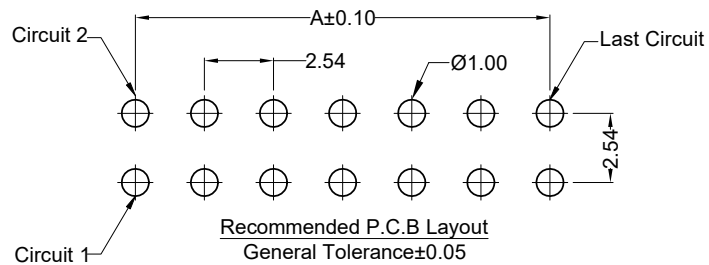
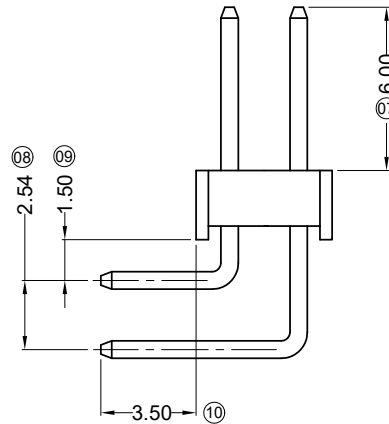
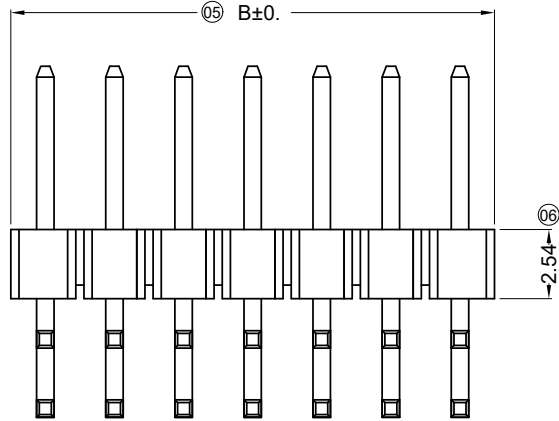
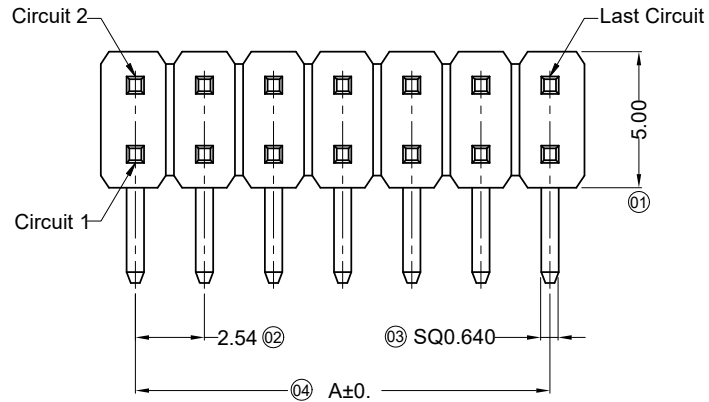
Recommended P.C.B Layout  
General Tolerance±0.05

Poles	Dimensions(mm)		Poles	Dimensions(mm)		Poles	Dimensions(mm)	
	A	B		A	B		A	B
2*02	2.54	5.08	2*15	35.56	38.10	2*28	68.58	71.12
2*03	5.08	7.62	2*16	38.10	40.64	2*29	71.12	73.66
2*04	7.62	10.16	2*17	40.64	43.18	2*30	73.66	76.20
2*05	10.16	12.70	2*18	43.18	45.72	2*31	76.20	78.74
2*06	12.70	15.24	2*19	45.72	48.26	2*32	78.74	81.28
2*07	15.24	17.78	2*20	48.26	50.80	2*33	81.28	83.82
2*08	17.78	20.32	2*21	50.80	53.34	2*34	83.82	86.36
2*09	20.32	22.86	2*22	53.34	55.88	2*35	86.36	88.90
2*10	22.86	25.40	2*23	55.88	58.42	2*36	88.90	91.44
2*11	25.40	27.94	2*24	58.42	60.96	2*37	91.44	93.98
2*12	27.94	30.48	2*25	60.96	63.50	2*38	93.98	96.52
2*13	30.48	33.02	2*26	63.50	66.04	2*39	96.52	99.06
2*14	33.02	35.56	2*27	66.04	68.58	2*40	99.06	101.60

2020/05/19	B	ER20200520003	1.CAP width dimension update to 4.60; Remove the bottom chamfering of the CAP 2.Add Prognostic slot	Mali	Joshua	<b>东莞市思索连接器有限公司</b> <b>SWB CONNECTORS CO.,LTD</b>				<b>PART NO.</b> 6501WR-2*XX-LPXXXX-V <b>TITLE</b> 2.54 mm Pin Header connectors				
DATE	REV	ECN NO.	DESCRIPTION	MODIFY	APPROVAL	APPROVAL	CHECK	DRAWN	DATE	UNIT	SCALE	SHEET	REV	NUMBER
1		2		4				Joshua	2018/08/13	mm	1:1	1/1	B	A-213

RoHS

This products can apply to the SWB Doc NO. QA-3-04-005 of Environmental&Material Management Rules



■ Specifications :

- Voltage rating: 250V AC / DC
- Current rating: 3A AC / DC
- Withstanding voltage: 800V AC/minute
- Temperature range: -40°C~+105°C
- Insulation resistance: ≥1000MΩ
- Contact resistance: ≤20mΩ
- After environmental testing: ≤30mΩ

- Material(Pin):Brass
- Mates with SWB Female Header: 6501FX

6501 W R X-2\*XX X-XX V01 XX-B

① ② ③ ④ ⑤ ⑥ ⑦ ⑧ ⑨ ⑩

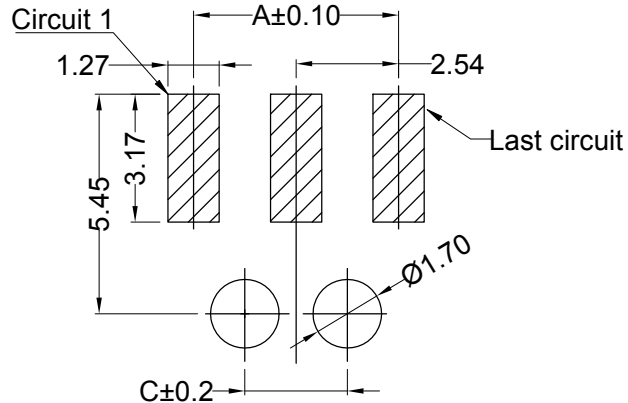
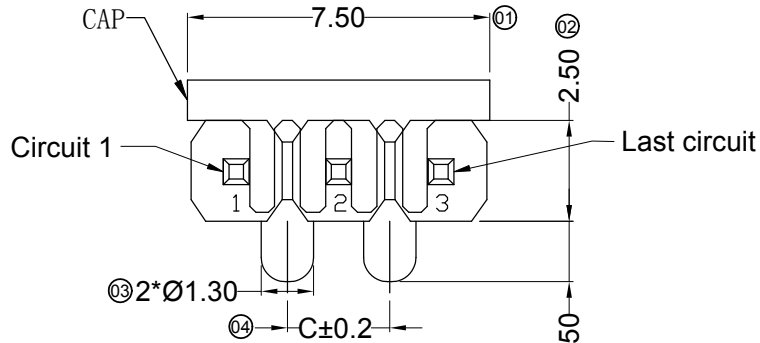
- ① Series No.
- ② Category: W-wafer
- ③ Connector Type: R- Right Angle 90°
- ④ Mouting Type: Blank-DIP
- ⑤ Row No.-Pin No Per Row: 2\*XX-2\*02P~2\*40P
- ⑥ Special No.: Blank-ordinary
- ⑦ Material: 6T-PA6T 94V-0 ;9T-PA9T 94V-0
- ⑧ Plating Code: V01- Gold Flash
- ⑨ Color: Blank-Black color
- ⑩ B-6.00/3.50

Poles	Dimensions(mm)		Poles	Dimensions(mm)		Poles	Dimensions(mm)	
	A	B		A	B		A	B
2*02	2.54	5.08	2*15	35.56	38.10	2*28	68.58	71.12
2*03	5.08	7.62	2*16	38.10	40.64	2*29	71.12	73.66
2*04	7.62	10.16	2*17	40.64	43.18	2*30	73.66	76.20
2*05	10.16	12.70	2*18	43.18	45.72	2*31	76.20	78.74
2*06	12.70	15.24	2*19	45.72	48.26	2*32	78.74	81.28
2*07	15.24	17.78	2*20	48.26	50.80	2*33	81.28	83.82
2*08	17.78	20.32	2*21	50.80	53.34	2*34	83.82	86.36
2*09	20.32	22.86	2*22	53.34	55.88	2*35	86.36	88.90
2*10	22.86	25.40	2*23	55.88	58.42	2*36	88.90	91.44
2*11	25.40	27.94	2*24	58.42	60.96	2*37	91.44	93.98
2*12	27.94	30.48	2*25	60.96	63.50	2*38	93.98	96.52
2*13	30.48	33.02	2*26	63.50	66.04	2*39	96.52	99.06
2*14	33.02	35.56	2*27	66.04	68.58	2*40	99.06	101.60

					<p>GENERAL TOLERANCE</p> <p>.X ±0.30</p> <p>.XX ±0.20</p> <p>.XXX ±0.10</p> <p>X.° ±2°</p>				<p>东莞市思索连接器有限公司</p> <p>SWB CONNECTORS CO.,LTD</p>				<p>PART NO.</p> <p>6501WR-2*XX-XXV01-B</p>																																									
					<p>APPROVAL</p> <p>Jacky</p>				<p>CHECK</p> <p>Jacky</p>				<p>DRAWN</p> <p>sylvia</p>				<p>DATE</p> <p>2015/06/22</p>				<p>TITLE</p> <p>2.54 mm Pin Header connectors</p>																																	
<p>2020/03/16</p> <p>DATE</p>					<p>B</p> <p>REV</p>					<p>EN20200316005</p> <p>ECN NO.</p>					<p>Update Drawing Frame</p> <p>DESCRIPTION</p>					<p>Mandy</p> <p>MODIFY</p>					<p>Robing</p> <p>APPROVAL</p>					<p>UNIT</p> <p>mm</p>					<p>SCALE</p> <p>1:1</p>					<p>SHEET</p> <p>1/1</p>					<p>REV</p> <p>B</p>					<p>NUMBER</p> <p>A-268</p>				

RoHS

This products can apply to the SWB Doc NO. QA-3-04-005 of Environmental&Material Management Rules



Recommended P.C.B Layout  
General Tolerance±0.05

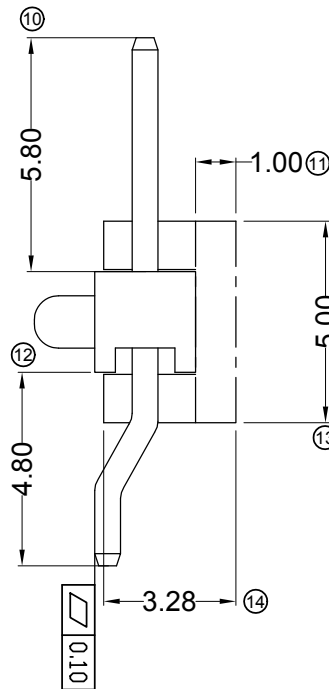
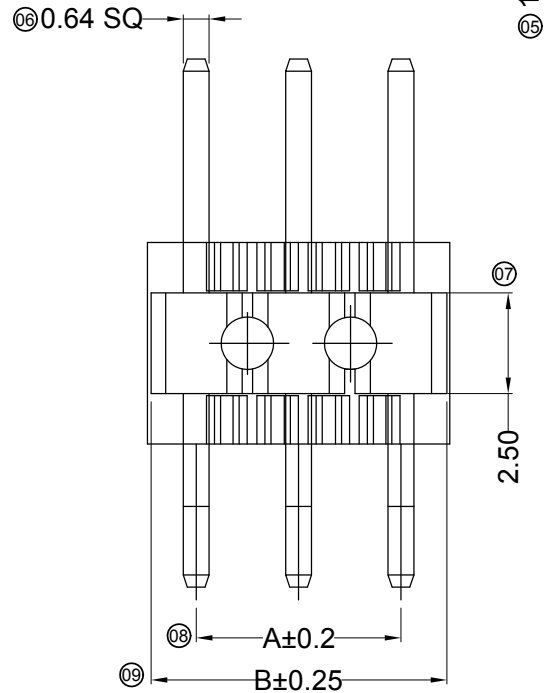
Specifications :

- Voltage rating: 250V AC / DC
- Current rating: 3A AC / DC
- Withstanding voltage: 500V AC/minute
- Temperature range: -40°C~+105°C
- Insulation resistance: ≥1000MΩ
- Contact resistance: ≤20mΩ
- After environmental testing: ≤30mΩ
- Material(Pin): Brass
- Mates With SWB Female Header:6501FX

6501 W R S - XX P - 9T XXX X XX- X  
① ② ③ ④ ⑤ ⑥ ⑦ ⑧ ⑨ ⑩ ⑪

- ① Series No.
- ② Category: W-wafer
- ③ Connector Type:R-90°
- ④ Mouting Type: S -SMT
- ⑤ Row No.-Pin No Per Row: XX-Single row
- ⑥ Special No.: P- With Post
- ⑦ Material.: 9T-PA9T 94V-0
- ⑧ Plating Code: V01- All Area Gold Flash; Ni 50"Min.  
G30-Contact Area Au 30u" Min.;  
Solder Area Matte Tin100"Min.;Ni 50"Min.
- ⑨ C- With CAP Blank-Without CAP
- ⑩ Color: Blank-Black Color
- ⑪ 01-5.80/2.50/4.80

Pin位	尺寸 (mm)			Pin位	尺寸 (mm)		
	A	B	C		A	B	C
01	--	2.26	--	11	25.40	27.66	22.86
02	2.54	4.80	--	12	27.94	30.20	25.40
03	5.08	7.34	2.54	13	30.48	32.74	27.94
04	7.62	9.88	5.08	14	33.02	35.28	30.48
05	10.16	12.42	7.62	15	35.56	37.82	33.02
06	12.70	14.96	10.16	16	38.10	40.36	35.56
07	15.24	17.50	12.70	17	40.64	42.90	38.10
08	17.78	20.04	15.24	18	43.18	45.44	40.64
09	20.32	22.58	17.78	19	45.72	47.98	43.18
10	22.86	25.12	20.32	20	48.26	50.52	45.72

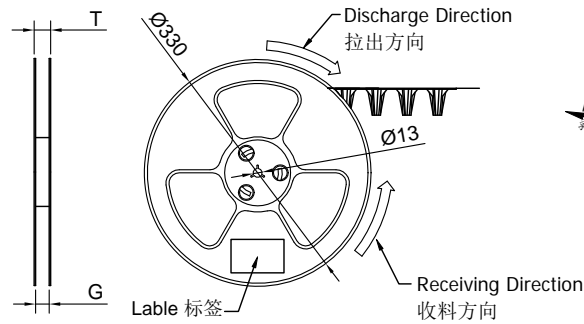
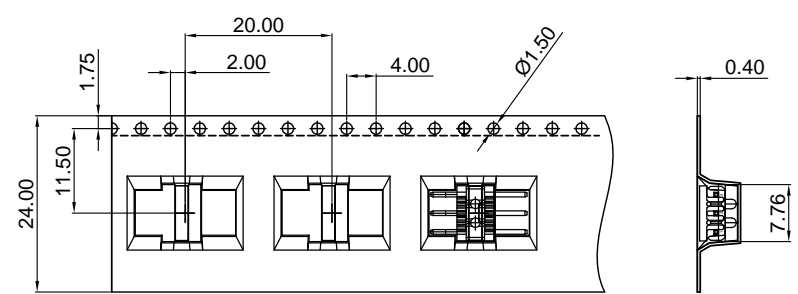
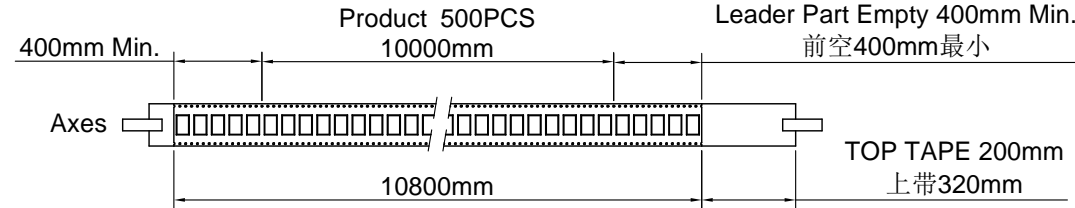


					<p>GENERAL TOLERANCE</p> <p>.X ±0.30</p> <p>.XX ±0.20</p> <p>.XXX ±0.10</p> <p>X.° ±2°</p>				<p>PROJECT</p> <p>① ②</p>				<p>APPROVAL</p> <p>Robing Joshua Rick 2020/02/24</p>				<p>PART NO. 6501WRS-XXP-9TV01C-01</p> <p>TITLE 2.54 mm Pin Header connectors</p> <p>UNIT SCALE SHEET REV NUMBER</p> <p>mm 1:1 1/1 A A-013</p>				
DATE	REV	ECN NO.	DESCRIPTION	MODIFY	APPROVAL	<p>东莞市思索连接器有限公司</p> <p>SWB CONNECTORS CO.,LTD</p>				<p>APPROVAL</p>											

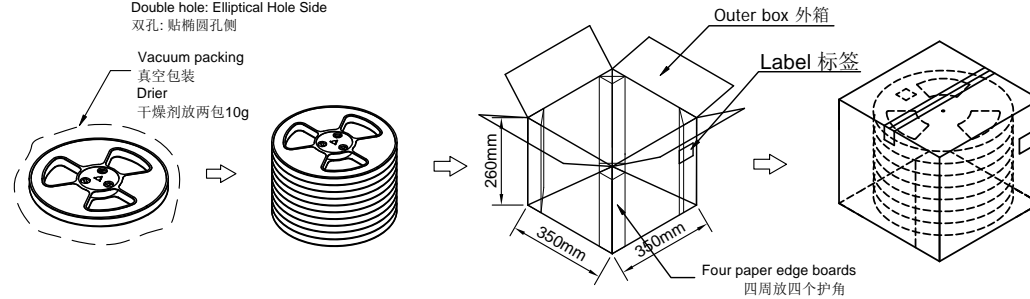
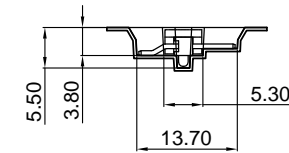
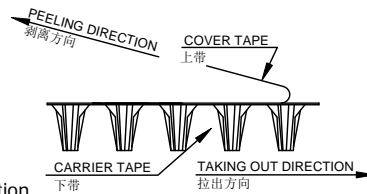
RoHS

本产品符合我司QA-3-04-005  
环境管理物质标准规范

包装图



COVER TAPE PEEL STRENGTH:20~120g  
上带剥离力量: 20~120g  
速度 PEEL SPEED:300mm/minute



Note:

- Carrier Camber Is Within 1mm In 100mm ; 带长100mm内容许弯曲度1mm
- 10 Sprocket Hole Pitch Cumulative Tolerance±0.2MM ; 圆孔十个孔距离累计允许公差为±0.2mm
- Materiaal for PS ; 材质为PS材质; Color颜色:透明色
- bracer保护带: Color颜色:Nature透明;厚度0.40mm最小
- Thinkess=0.40±0.05 ; 材料厚度为0.40±0.05mm
- Cover Tape上带: 冷封
- Carton material纸箱材质:K=K; Carton Thickness纸箱厚度: 6~7mm

ZD6501WRS-XXPHF 6501WRS-XXP-9TV01C-01	Part No.	W	S	F	T (MAX)	G (MAX)	REEL /PCS	CARTON /R	CARTON /PCS
	ZD6501WRS-03PHF	24	/	11.50	28.50	24.40	500	8R	4000

日期	版次	变更编号	变更内容说明	变更人	核准	视角					
						<table border="1"> <tr><td>一般公差</td></tr> <tr><td>.X ±0.35</td></tr> <tr><td>.XX ±0.25</td></tr> <tr><td>.XXX ±0.15</td></tr> <tr><td>X° ±0.2°</td></tr> </table>	一般公差	.X ±0.35	.XX ±0.25	.XXX ±0.15	X° ±0.2°
一般公差											
.X ±0.35											
.XX ±0.25											
.XXX ±0.15											
X° ±0.2°											



东莞市思索连接器有限公司

SWB CONNECTORS CO.,LTD

核准	审查	制作	日期
Robing	Robing	Mali	2020/04/28

料号: PPN:6501WRS-XXP-9TV01C-01  
CTN: ZD6501WRS-XXPHF

名称:  
2.54mm Header 90° Package

单位	比例	页次	版本	编号
MM	1:1	1/1	A	A-013